

STANDARD CONSTRUCTION DRAWING DETAILS

ANY DRAWINGS NOT INCLUDED WILL
FOLLOW THE MOST CURRENT APWA
UTAH CHAPTER AND EAGLE MOUNTAIN
CITY MUNICIPAL CODE



TABLE OF CONTENTS

- SHEET - 1. SEWER & WATER CONNECTION TO HOMES
- SHEET - 2. SEWER LATERAL SERVICE & CONNECTION
- SHEET - 3. WATER CAN RELOCATE
- SHEET - 4. 1 1/2" & 2" METER
- SHEET - 5. WATER LINE, SETTER, & WATER CAN
- SHEET - 6. NO CONCRETE AROUND WATER CAN LID
- SHEET - 7. WATER SAMPLING STATION
- SHEET - 8. LARGE COMPOUND METER W/2" BYPASS, 3" OR 4" METER
- SHEET - 9. LARGE COMPOUND METER W/2" BYPASS, 6" OR 8" METER
- SHEET - 10. WATER PRV & VAULT
- SHEET - 11. CAST IN PLACE VENT PIPE DETAIL, PRV
- SHEET - 12. WATER AIR VAC
- SHEET - 13. WATER AIR VAC VENT
- SHEET - 14. FIRE HYDRANT & VALVE
- SHEET - 15. PI, 1" SINGLE & DUAL SERVICE LATERAL
- SHEET - 16. DRIVE APPROACH FOR WATERWAYS
- SHEET - 17. ADA FOR DRIVEWAYS
- SHEET - 18. ISO BOX WITH SNOUT SHEET 1
- SHEET - 19. ISO BOX WITH SNOUT SHEET 2
- SHEET - 20. TYPE 'A' & 'D' CURB BOX PLACEMENT
- SHEET - 21. 1 ACRE OR LARGER RESIDENCE & ALL COMMERCIAL SWPPP SIGN
- SHEET - 22. SINGLE FAMILY RESIDENCE SWPPP SIGN
- SHEET - 23. CONCRETE COLLARS FOR MANHOLES
- SHEET - 24. CONCRETE COLLARS FOR WATER VALVES
- SHEET - 25. PUE, UTILITIES, SETBACK DETAIL
- SHEET - 26. CMU BLOCK RETAINING WALL
- SHEET - 27. TIMBER RETAINING WALL
- SHEET - 28. ROCKERY RETAINING WALL
- SHEET - 29. PORTABLE TOILET
- SHEET - 30. INLET PROTECTION
- SHEET - 31. POTHOLE REPAIR
- SHEET - 32. MANHOLE CROSS SECTION

DRAWN	RSB
REVISED	MARCH 2026
DATE	APRIL 2024
SCALE	N.T.S.

EAGLE MOUNTAIN CITY



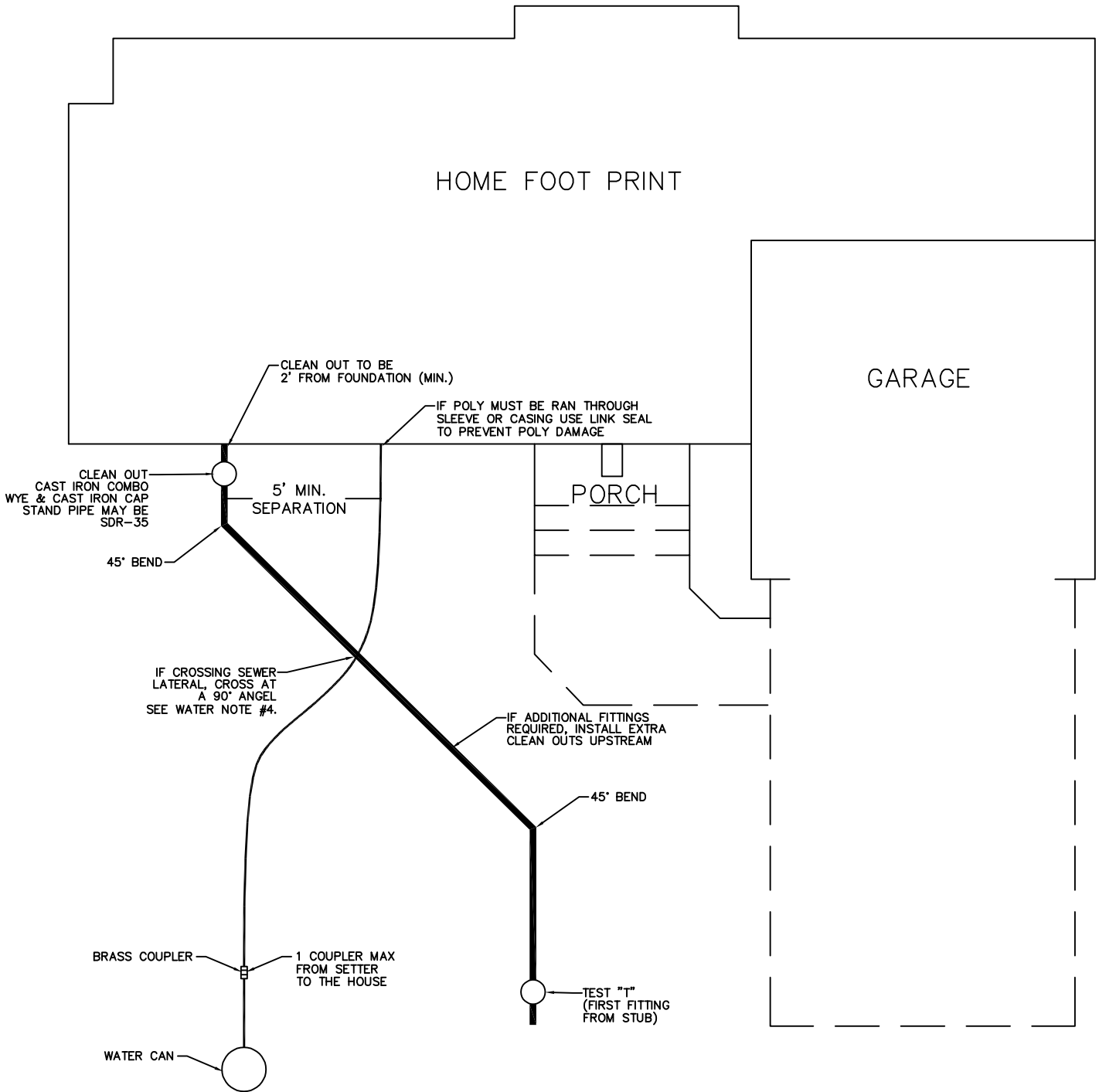
STANDARD DETAILS FOR

DETAILS TABLE OF CONTENTS

DRAWING NO.

TC

SEWER & WATER CONNECTION TO THE HOME



SEWER NOTES:

1. CLEAN OUTS ARE NOT ALLOWED UNDER ANY PERMANENT SURFACES, BAY WINDOWS, PORCHES, WINDOW WELLS, ETC.
2. WATER TEST REQUIRED.
3. 90° DEFLECTION (MAX.) PER CLEAN OUT.
4. 24" MIN. BETWEEN FITTINGS/BENDS.
5. 2% MIN. SLOPE WITH 4" PIPE.
6. MAXIMUM OF 100' BETWEEN MAIN & 1st CLEAN OUT.
7. 3/4" GRAVEL OR PEA GRAVEL REQUIRED 6" BELOW & TO THE SIDES & 12" ABOVE THE PIPE (MIN.)
8. LEANING CLEANOUT STAND PIPE OVER 5' NOT ALLOWED.
9. FERNCO COUPLERS WITH STAINLESS SHEAR BANDS ON ALL CAST IRON CLEAN OUTS.

WATER NOTES:

1. 48" MINIMUM COVER ON SERVICE LINE.
2. TAR IS REQUIRED TO SEAL THE HOLE IN THE FOUNDATION.
3. PLACE A-3 SAND AFTER METER ON WATER SERVICE.
4. MINIMUM 18" VERTICAL SEPARATION BETWEEN WATER LINE AND SANITARY SEWER.
5. NO COUPLERS ON CITY SIDE OF THE SETTER UNLESS FOLLOWING WATER CAN MOVE DETAIL.

DRAWN RSB
 REVISED JAN 2026
 DATE SEPT 2017
 SCALE N.T.S.

EAGLE MOUNTAIN CITY

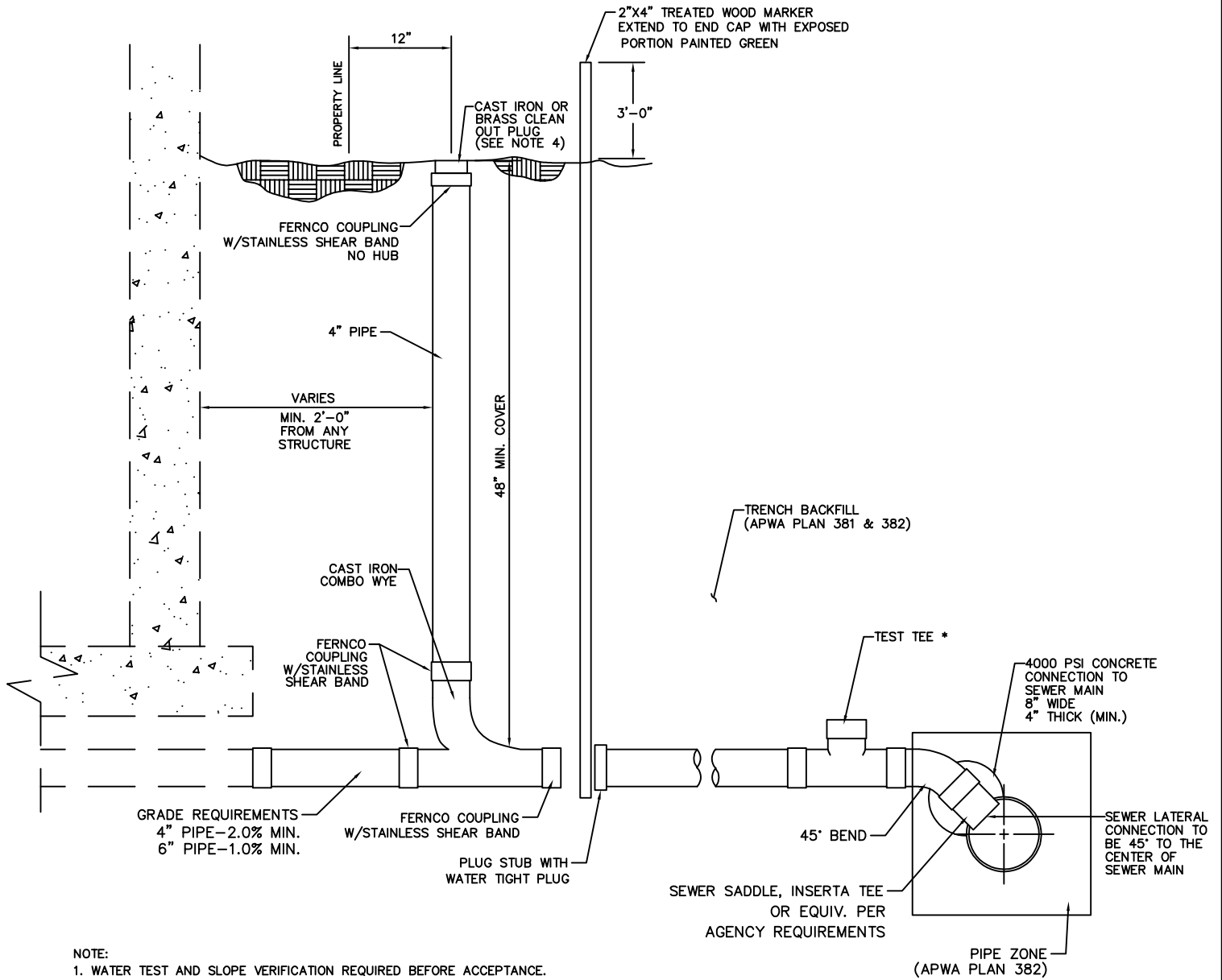


STANDARD DETAILS FOR

SEWER & WATER CONNECTION TO HOME

DRAWING NO.

1



SEWER LATERAL SERVICE & CONNECTION TO EXISTING MAINLINE

DRAWN RSB
REVISED APRIL 2024
DATE SEPT 2017
SCALE N.T.S.

EAGLE MOUNTAIN CITY



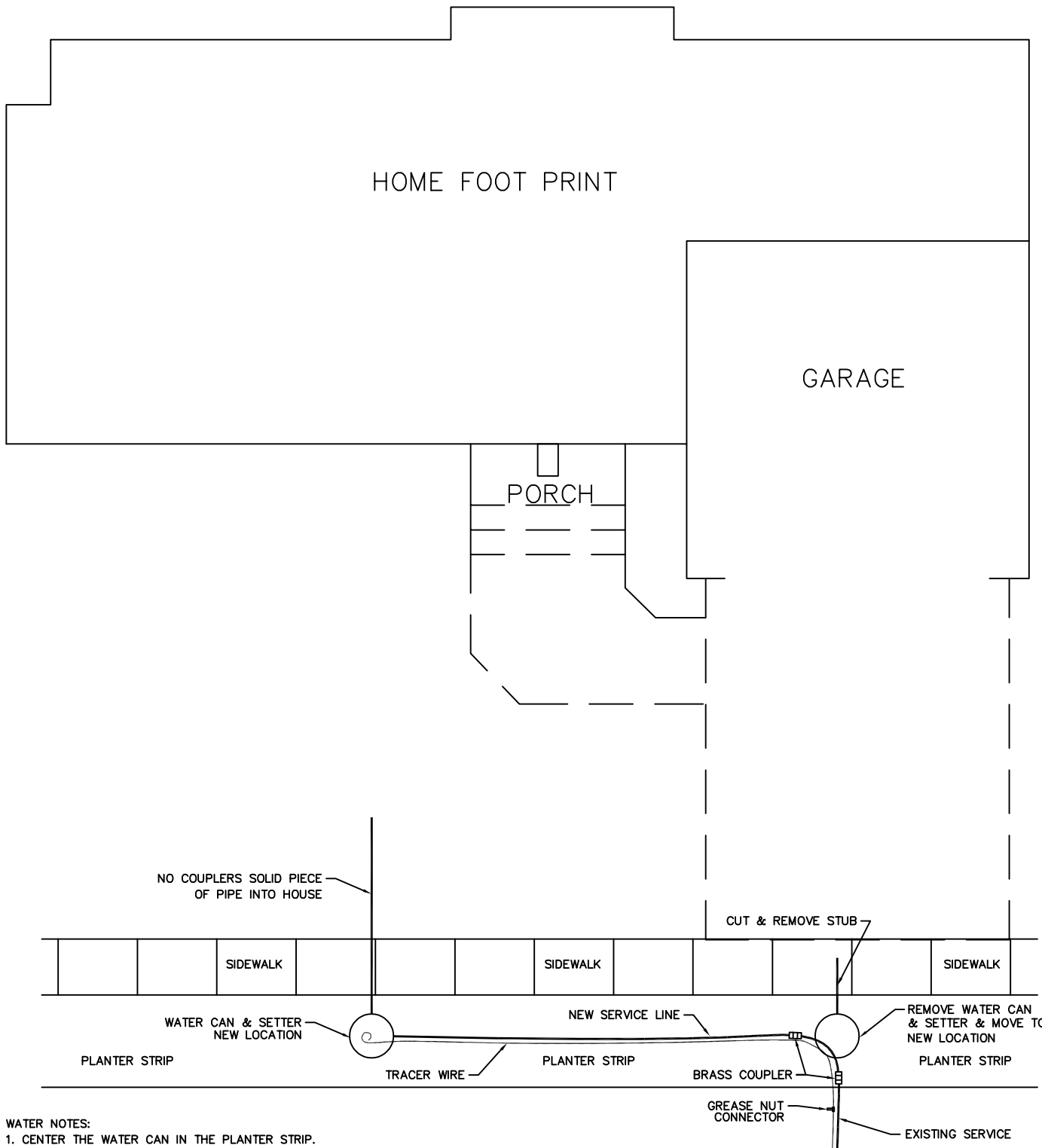
STANDARD DETAILS FOR

SEWER LATERAL SERVICE
& CONNECTION

DRAWING NO.

2

WATER CAN RELOCATE OUT OF DRIVEWAY



WATER NOTES:

1. CENTER THE WATER CAN IN THE PLANTER STRIP.
2. WATER CAN TO BE LEVEL TO 1" ABOVE THE PLANE OF THE CURB & GUTTER & SIDEWALK.
(MONOLITHIC WALK THE CAN NEEDS TO BE A 2% SLOPE FROM THE SIDEWALK EDGE OR 1" ABOVE WALK.)
3. SETTER TO BE CENTERED IN THE WATER CAN AND 18" TO 22" FROM TOP OF SETTER TO TOP OF LID ON RING.
4. WATER CAN LID TO SAY EAGLE MOUNTAIN ON IT WITH 2" HOLE. SEE DETAIL WSC-1 (WATER CAN DETAIL).
5. IF CRIMPING OF THE POLY IS REQUIRED INSTALL COUPLER OVER CRIMPED AREA (1ST COUPLER).
6. BEDDING SAND TO MEET CITY STANDARDS REQUIRED TO BACK OF WALK.
7. BACK FILL WITH E-FILL & TEST TO BACK OF WALK.
8. CONNECT ONTO TRACER WIRE W/GREASE NUT & EXTEND INTO THE WATER CAN W/3' PIGTAIL.

DRAWN	RSB
REVISED	APRIL 2024
DATE	SEPT 2017
SCALE	N.T.S.

EAGLE MOUNTAIN CITY

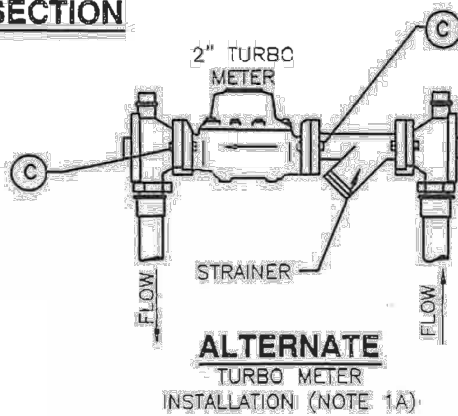
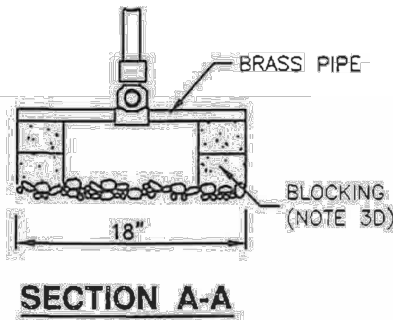
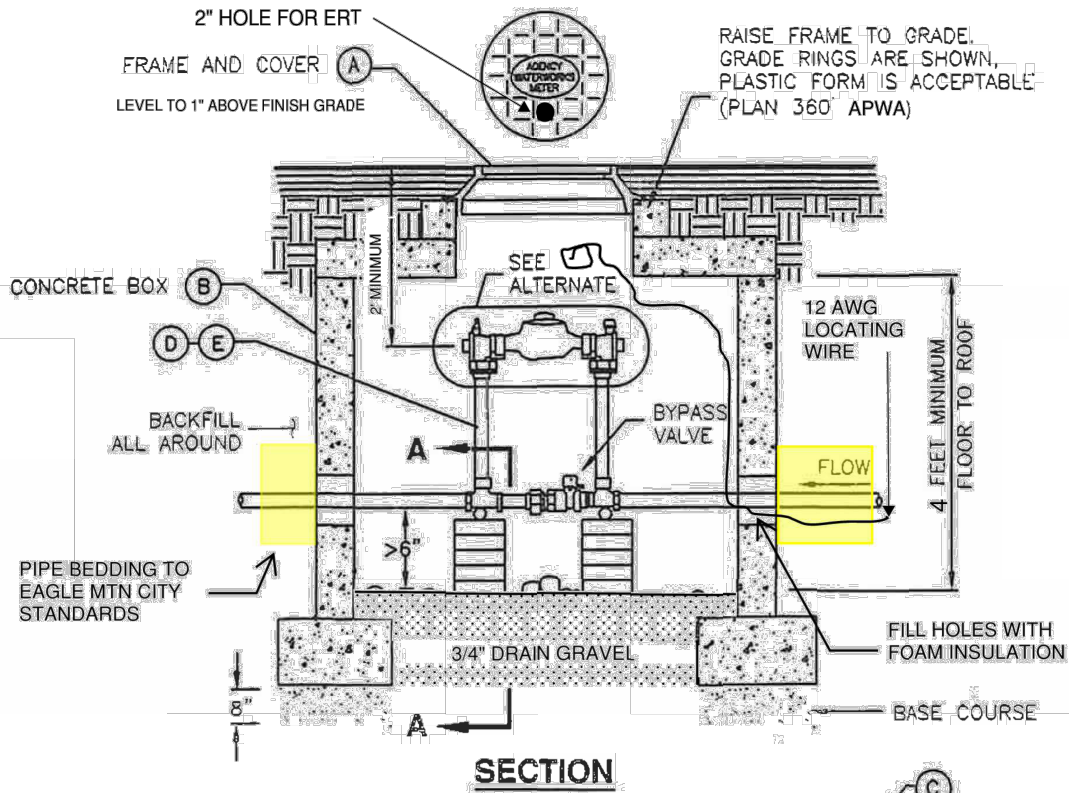


STANDARD DETAILS FOR

WATER CAN RELOCATE

DRAWING NO.

3



NOTES:

- 1) SETTER CANNOT OBSTRUCT OPENING- USE LID WITH OFFSET HOLE.
- 2) ALL POLY PIPE TO BE RATED FOR 200 PSI AND CTS O.D.
- 3) CONCRETE COLLARS ARE REQUIRED IN GRASS OR IF PLASTIC FORM RISERS ARE USED. 12" OF RISE WITH GRADE RINGS / FORM MAX.
- 4) ALL PIPE BEDDING AND TRENCH FILL MUST MEET EAGLE MTN CITY STANDARDS.
- 5) A VISUAL POLY STIFFENER CHECK IS REQUIRED BEFORE FITTINGS ARE TIGHTENED.
- 6) BYPASS NOT ALLOWED ON STEERS USED FOR IRRIGATION (D/E)

LEGEND			
No.	*	ITEM	DESCRIPTION
(A)		27" FRAME AND COVER	PLAN 502 APWA
(B)		CONCRETE BOX	4' X 4' X 4' MIN.
(C)		STAINLESS STEEL METER BOLTS	5/8" x 2 3/4" BRASS
(D)		1 1/2" CUSTOM SETTER WITH BYPASS	
(E)		2" CUSTOM SETTER WITH BYPASS	

* FURNISHED BY UTILITY AGENCY

NOTE: ALL MATERIALS MUST BE APPROVED THROUGH SUBMITTALS

1 1/2" and 2" meter



DRAWN RSB
 REVISED AUG. 2024
 DATE APRIL 2024
 SCALE N.T.S.

EAGLE MOUNTAIN CITY



STANDARD DETAILS FOR

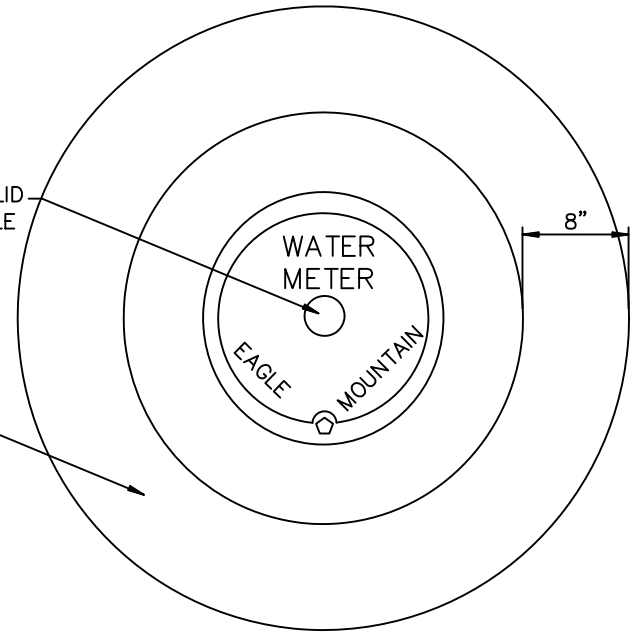
1 1/2" AND 2" METER

DRAWING NO.

4

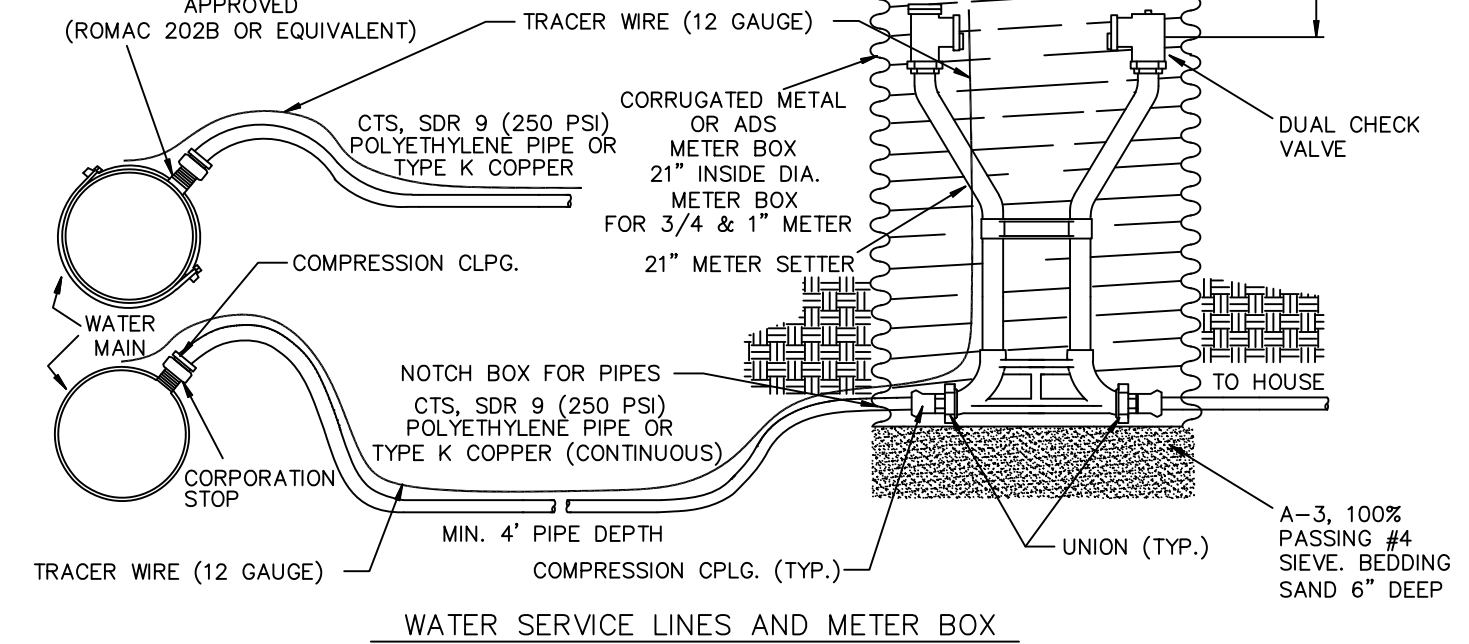
METER BOX LID WITH 2" HOLE

KEEP CONCRETE 8" AWAY FROM WATER LID RING.



BRASS DOUBLE STRAP SERVICE SADDLE WITH CORPORATION STOP FOR 3/4" TO 1-1/2" SERVICE LINES IN DUCTILE IRON PIPES AND ALL STRAPS FOR PLASTIC TO BE PVC RATED & APPROVED (ROMAC 202B OR EQUIVALENT)

SIDEWALK



WATER SERVICE LINES AND METER BOX

NOTE: 1.5" AND LARGER WATER METER SHALL CONFORM TO STANDRAD FOR LARGE METERS. SEE DRAWING #LCM-1

DRAWN	RSB
REVISED	MAY 2025
DATE	NOV 2015
SCALE	N.T.S.

EAGLE MOUNTAIN CITY

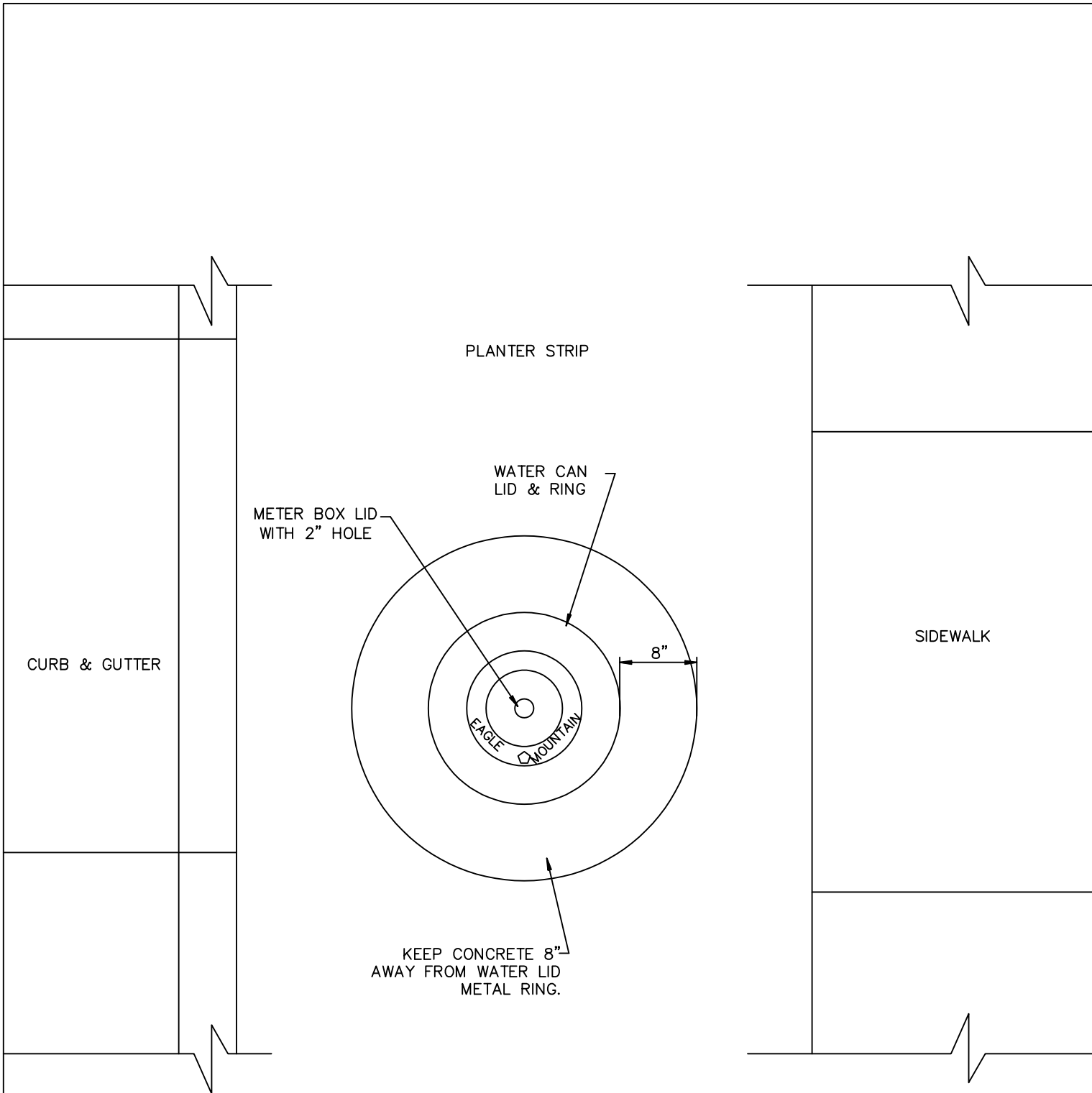


STANDARD DETAILS FOR

WATER LINE, SETTER & CAN

DRAWING NO.

5



NOTE:

- 1. WATER CAN TO BE CENTERED IN THE PARK STRIP.

DRAWN	RSB
REVISED	APRIL 2024
DATE	JAN 2018
SCALE	N.T.S.

EAGLE MOUNTAIN CITY

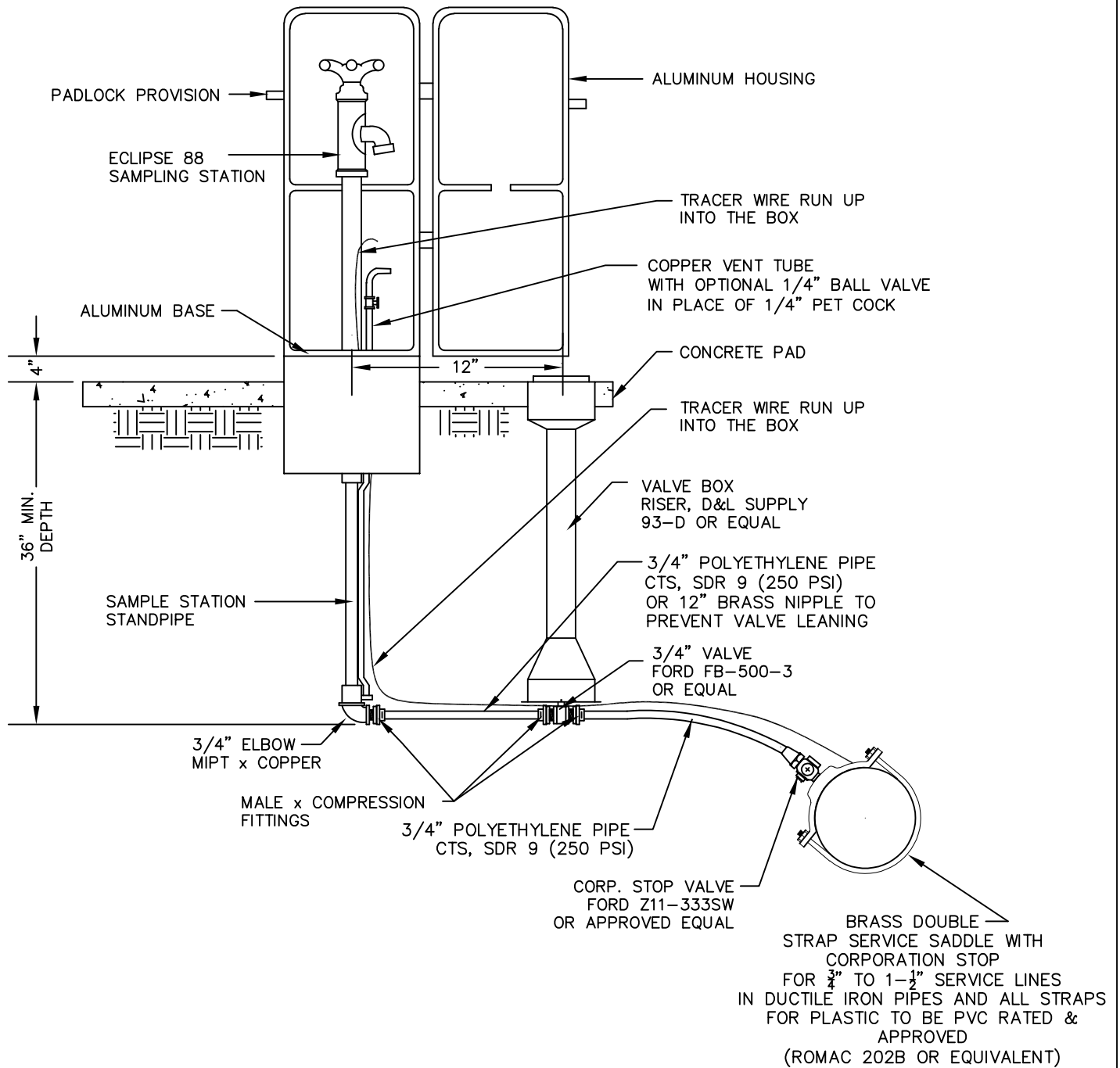


STANDARD DETAILS FOR

NO CONCRETE AROUND WTR CAN LID

DRAWING NO.

6



ONE SAMPLE STATION REQUIRED IN EACH RESIDENTIAL DEVELOPMENT AND A MINIMUM OF ONE SAMPLING STATION PER 100 LOTS.

1. LOCATION: Sample stations to be located on a lot line, in the park strips between curb and sidewalk as shown on plan or as directed. Concrete pad to placed around Sampling station from sidewalk to back of curb 4' wide.
2. INSPECTION: Prior to backfilling around the assembly, secure inspection of installation by ENGINEER.
3. SMALL FITTINGS: Provide brass fittings and nipples if not specified otherwise.
4. A-3 sand required 6" below to the sides & 12" above (min.) of the pipe.

DRAWN	RSB
REVISED	APRIL 2024
DATE	MAY 2015
SCALE	VARIES

EAGLE MOUNTAIN CITY

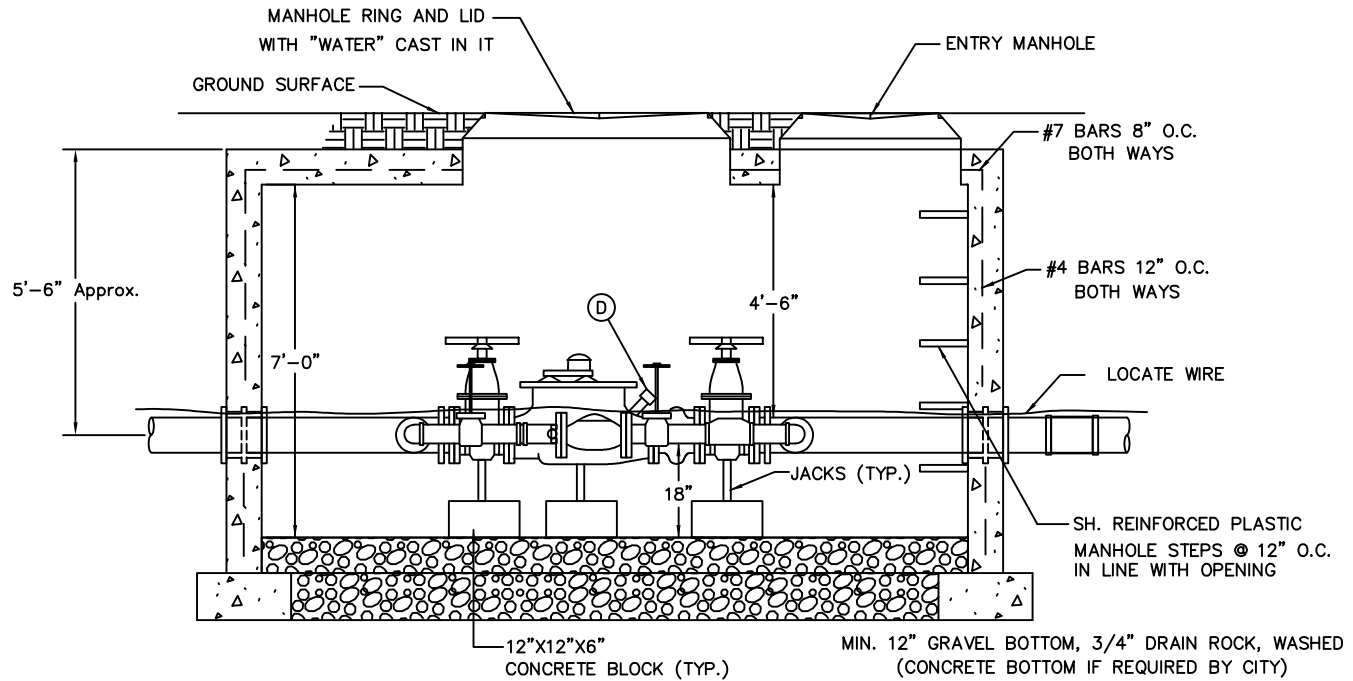
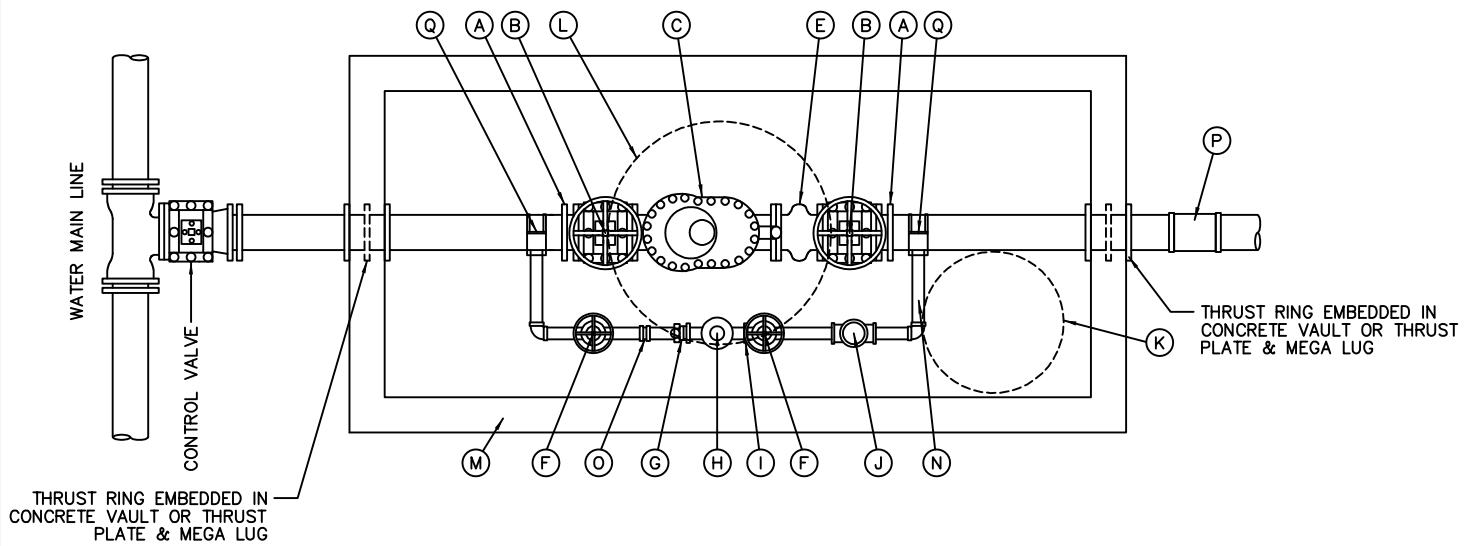


STANDARD DETAILS FOR

WATER SAMPLING STATION

DRAWING NO.

7



LEDGEND		
LTR	* ITEM	DESCRIPTION
A	3" OR 4" FLANGE X P.E. D.I.P. SPOOL W/2" HOLE 9" F.F.E ON TOP	SMITH-BLAIR FLANGE COUPLING
B	3" OR 4" GATE VALVE WITH HAND WHEEL	
C	3" OR 4" COMPOUND METER	SENSUS OMNI
D	2" TEST ASSEMBLY	
E	3" OR 4" CHECK VALVE	
F	2" GATE VALVE (BRONZE)	
G	2" METER FLANGE	
H	* 2" DISPLACEMENT METER	
I	2" MALE METER FLANGE	
J	2" CHECK VALVE (BRONZE)	
K	27" FRAME & COVER, MANHOLE	APWA, PLAN 502
L	38" FRAME & COVER, MANHOLE W/2" HOLE FOR E.R.T.	APWA, PLAN 503
M	CONCRETE BOX (VAULT) DIMENSIONS ONLY	APWA, PLAN 505
N	BRASS PIPING	
O	2" BRASS UNION	
P	MJ SLEEVE	
Q	BRASS SADDLE	

* FURNISHED BY AGENCY

NOTE:

1. ALL 4" PIPE TO BE D.I.
2. ALL 2" PIPE TO BE BRASS/COPPER.
3. THIS DRAWING SHOWS A 4" METER, OTHER SIZES WILL BE SIMILAR.
4. BYPASS REQUIRED ON ALL METERS 2" AND LARGER.
5. NUTS & BOLTS REQUIRED TO BE STAINLESS STEEL W/ANTI SEIZE THREAD COMPOUND.

DRAWN RSB
 REVISED APRIL 2024
 DATE MAY 2017
 SCALE VARIES

EAGLE MOUNTAIN CITY

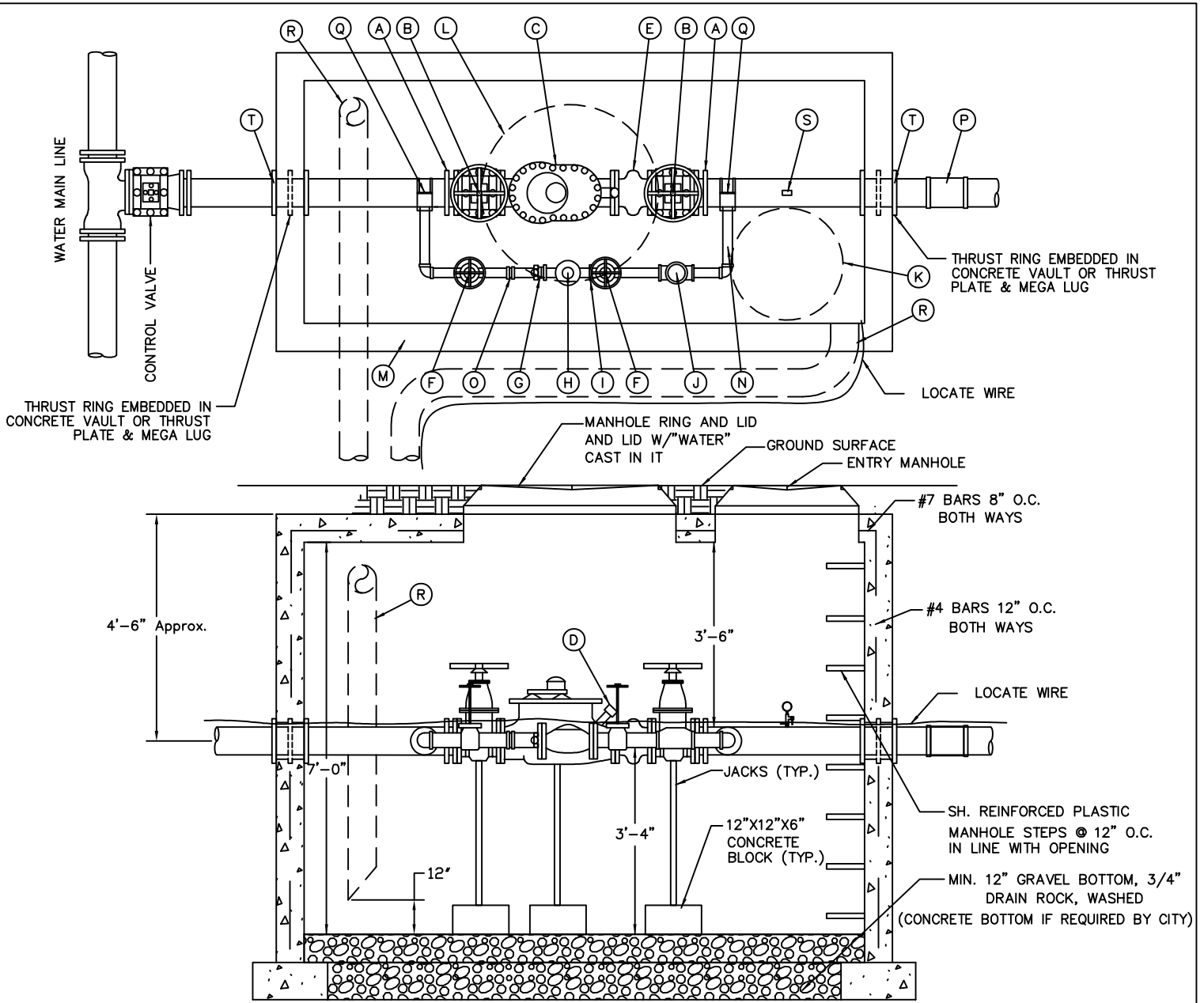


STANDARD DETAILS FOR

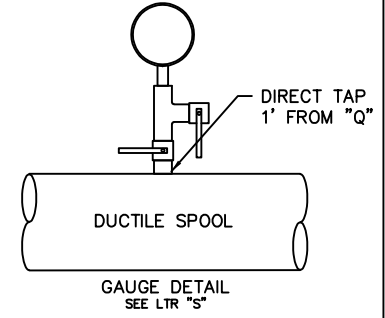
LARGE COMPOUND METER W/2" BYPASS
 3" OR 4" METER

DRAWING NO.

8



LEDGEND		
LTR	ITEM	DESCRIPTION
A	6" OR 8" FLANGE X P.E. D.I.P. SPOOL W/2" HOLE 9" F.F.E ON TOP	SMITH-BLAIR FLANGE COUPLING
B	6" OR 8" GATE VALVE WITH HAND WHEEL	
C	6" OR 8" COMPOUND METER W/INTERNAL STRAINER	SENSUS OMNI C-2
D	2" TEST ASSEMBLY	
E	6" OR 8" CHECK VALVE	
F	2" GATE VALVE (BRONZE)	
G	2" METER FLANGE	
H *	2" DISPLACEMENT METER	
I	2" MALE METER FLANGE	
J	2" CHECK VALVE (BRONZE)	
K	27" FRAME & COVER, MANHOLE	PLAN 502
L	38" FRAME & COVER, MANHOLE W/2" HOLE FOR E.R.T.	PLAN 503
M	CONCRETE BOX (VAULT) DIMENSIONS ONLY	PLAN 505
N	BRASS PIPING	
O	2" BRASS UNION	
P	MJ SLEEVE	
Q	BRASS SADDLE	
R	VENT PIPES	
S	3/4" BRASS TEE, 2 BALL VALVES, & OIL FILLED PRESSURE GAUGE	
T	1/4" STEEL PLATE W/MEGA-LUG AGAINST VAULT WALL OR THRUST RING EMBEDDED IN VAULT WALL	



- NOTE:
1. ALL 6" OR 8" PIPE TO BE D.I.
 2. ALL 2" PIPE TO BE BRASS/COPPER.
 3. THIS DRAWING SHOWS A 6" METER, OTHER SIZES WILL BE SIMILAR.
 4. BYPASS REQUIRED ON ALL METERS 2" AND LARGER.
 5. NUTS & BOLTS REQUIRED TO BE STAINLESS STEEL W/ANTI SEIZE THREAD COMPOUND.

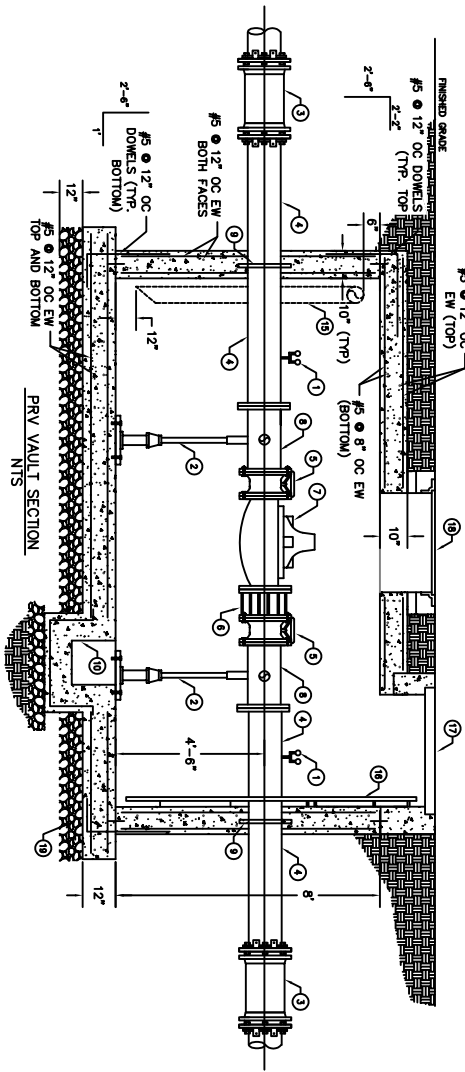
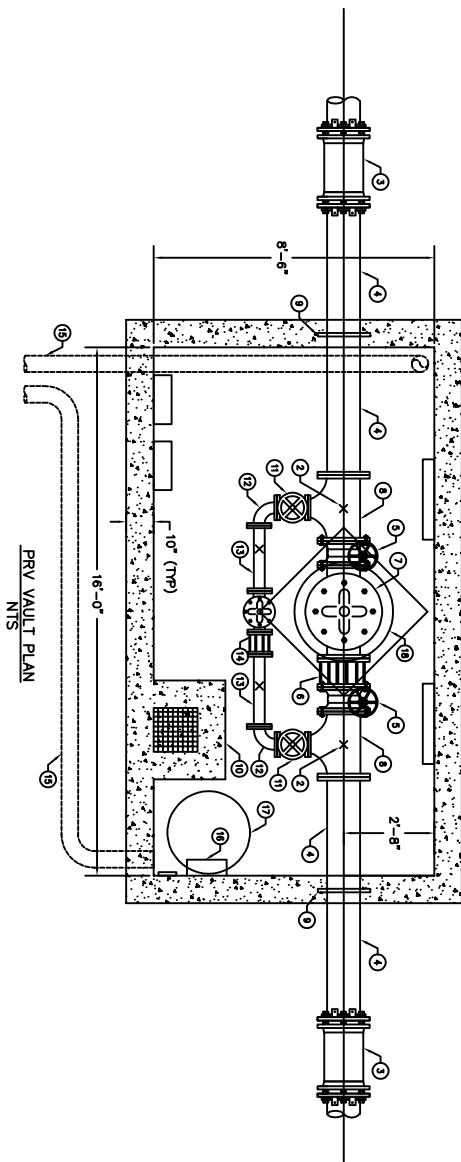
DRAWN RSB
 REVISED APRIL 2024
 DATE FEB 2020
 SCALE VARIES

EAGLE MOUNTAIN CITY



STANDARD DETAILS FOR
 LARGE COMPOUND METER W/2" BYPASS
 6" OR 8" METER

DRAWING NO.
 9



ITEM	SIZE	DESCRIPTION	QTY	ENDS
1	--	PRESSURE GAGE LIQUID FILLED WITH BRASS VALVE, NIPPLES AND HOSE BIB	2	THREADED
2	--	PIPE SUPPORT	2	--
3	12"	D1 LONG BODY SLEEVE WITH MEGALUG FOLLOWERS	2	--
4	12"	D1 SPOOL	2	MANFL
5	12"	200# ANSI FLANGE BUTTERFLY VALVE WITH HANDWHEEL	2	FLANGED
6	12"	DISMANTLING JOINT	1	FLANGED
7	12"	PRESSURE REDUCING VALVE	1	FLANGED
8	12 3/4"	TEE	2	FLANGED
9	12"	THRUST RING	2	--
10	16"	16" SQUARE AND DEEP CONCRETE SUMP PIT WITH FIBERGLASS GRATING.	1	--
11	4"	200# ANSI FLANGE BUTTERFLY VALVE WITH HANDWHEEL	2	--
12	4"	90° DIP BEND	2	FLANGED
13	4"	D1 SPOOL	2	FLANGED
14	4"	DISMANTLING JOINT	2	FLANGED
15	6"	SCHEDULE 80 PVC PASSIVE VENT PIPING OUT THE SIDE	2	--
16	--	GALVANIZED LADDER	1	--
17	30"	H-20 RATED MANHOLE FRAME, COVER, & GRADE RING.	1	--
18	36"	H-20 RATED MANHOLE FRAME, COVER, & GRADE RING, CENTER OVER 12" PRV.	1	--
19	--	UNTREATED BASE COURSE MATERIAL	-	--

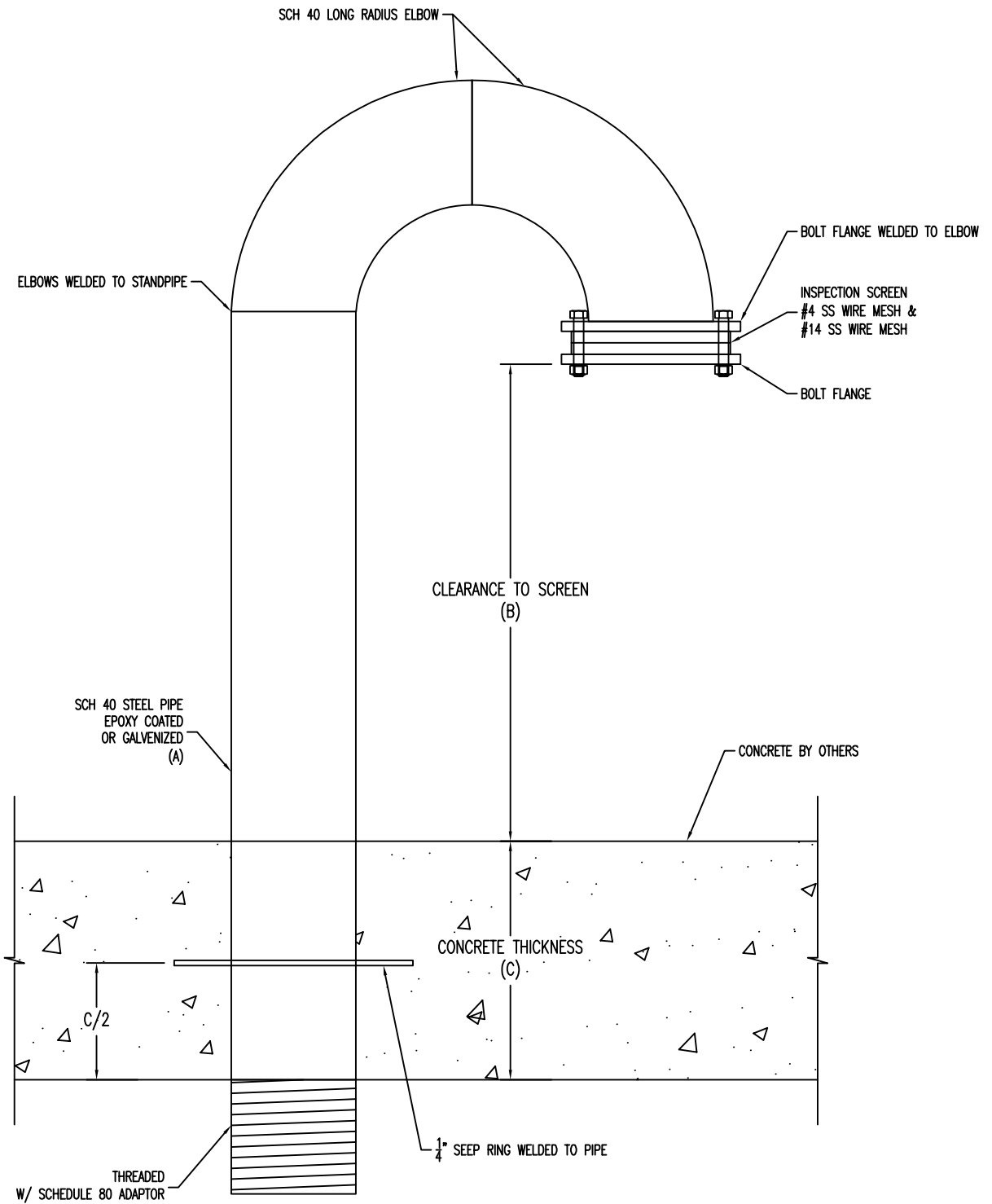
NOTE: ALL NUTS AND BOLTS TO BE CORROSION FREE, I.E. STAINLESS STEEL W/ANTI SEIZE THREAD COMPOUND.

DRAWN RSB
 REVISED APRIL 2024
 DATE MARCH 2016
 SCALE VARIES

EAGLE MOUNTAIN CITY



STANDARD DETAILS FOR
 WATER PRV & VAULT



VENT PIPE DIMENSIONS		
PIPE SIZE (A)	CLEARANCE TO SCREEN (B)	CONCRETE THICKNESS (C)
6"	24"	6"

DRAWN RSB
 REVISED APRIL 2024
 DATE NOV 2015
 SCALE VARIES

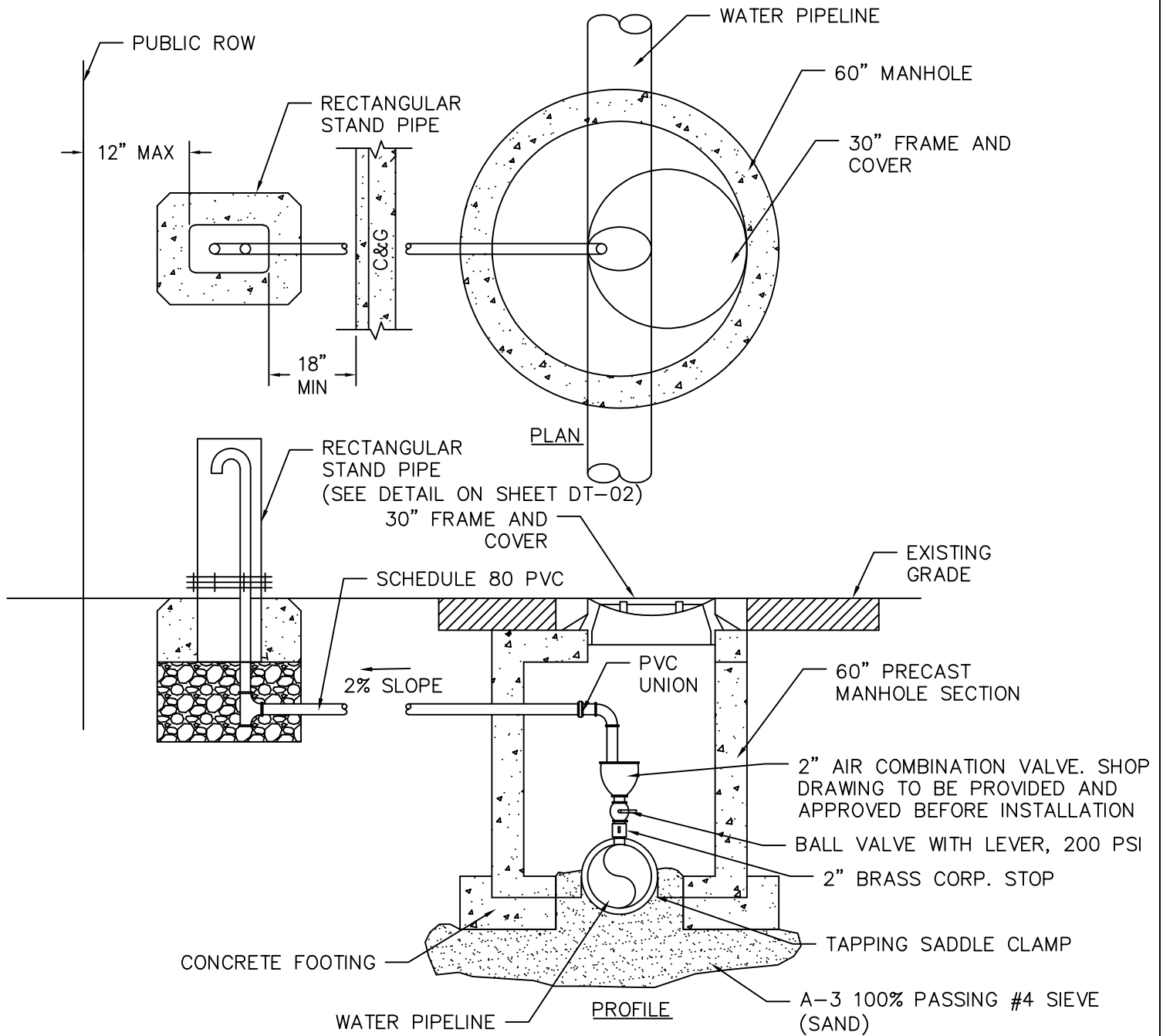
EAGLE MOUNTAIN CITY



STANDARD DETAILS FOR
 CAST IN PLACE VENT PIPE DETAIL

DRAWING NO.

11



1. AIR VALVE STRUTURE: PLACE AIR VALVE STRUCTURE AT LOCATIONS SHOWN ON PLANS
2. AIR VENT STANDPIPE: LOCATE STAND PIPE BEHIND CURB OR OUTSIDE OF ROADWAY PAVEMENT
3. INSPECTION; PRIOR TO BACKFILLING AROUND ASSEMBLY, SECURE INSPECTION OF INSTALLATION BY PROJECT REPRESENTATIVE
4. BACKFILL: INSTALL AND COMPACT BACKFILL MATERIAL PER SPECIFICATION

DRAWN RSB
 REVISED APRIL 2024
 DATE MARCH 2016
 SCALE VARIES

EAGLE MOUNTAIN CITY

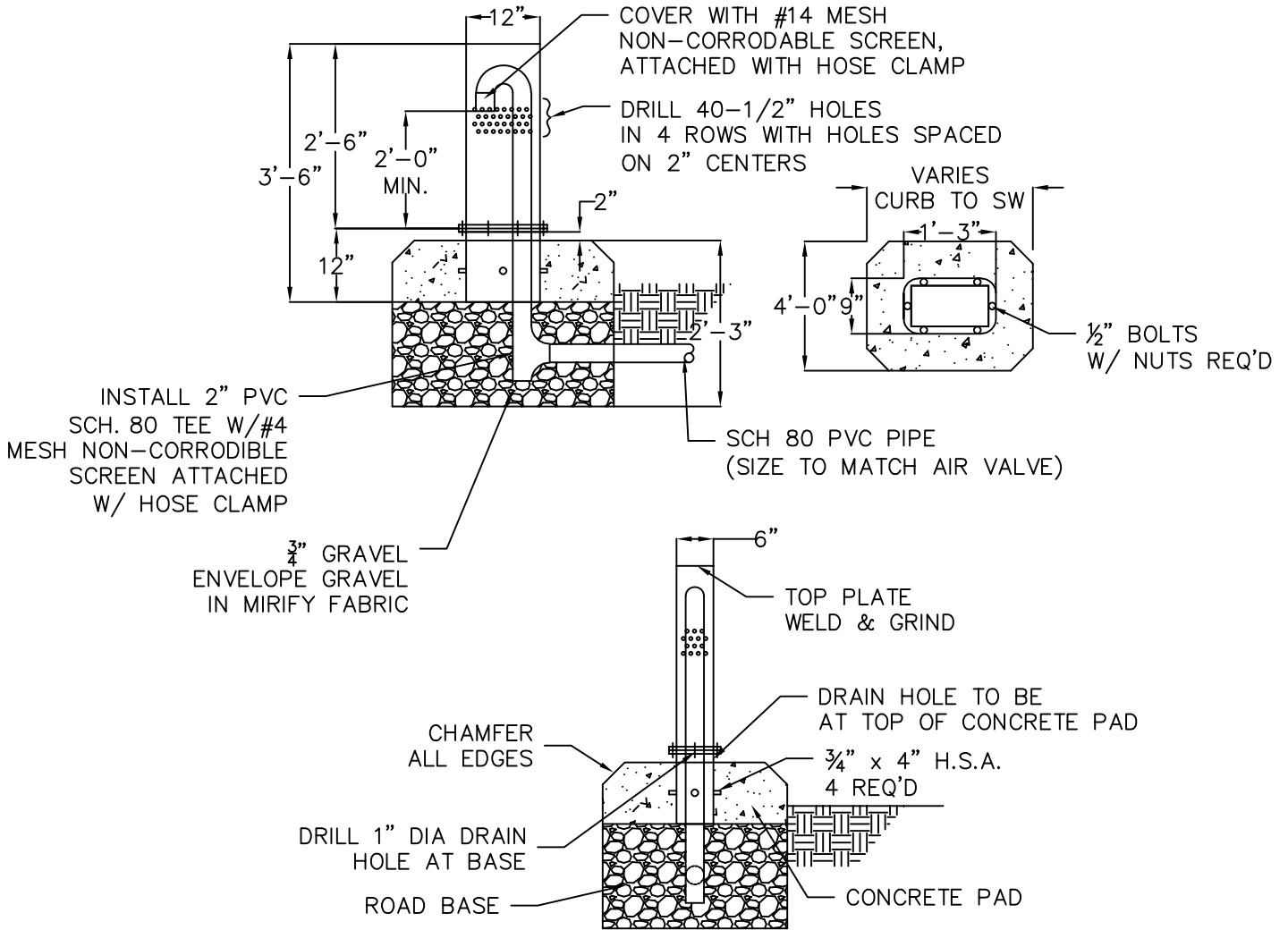


STANDARD DETAILS FOR

WATER AIR VAC

DRAWING NO.

12



1. LOCATION: LOCATE STANDPIPE BEHIND CURB OR OUTSIDE OF ROADWAY AS SHOWN ON PLANS OR AS REQUIRED
2. INSPECTION: PRIOR TO BOLTING VENT CAP OVER ASSEMBLY, SECURE INSPECTION OF INSTALLATION BY EAGLE MOUNTAIN CITY
3. FABRICATION: FABRICATE FROM 1/4" STEEL PLATE.
4. GALVANIZE: HOT DIP GALVANIZE AFTER FABRICATION

DRAWN	RSB
REVISED	APRIL 2024
DATE	MARCH 2016
SCALE	VARIES

EAGLE MOUNTAIN CITY

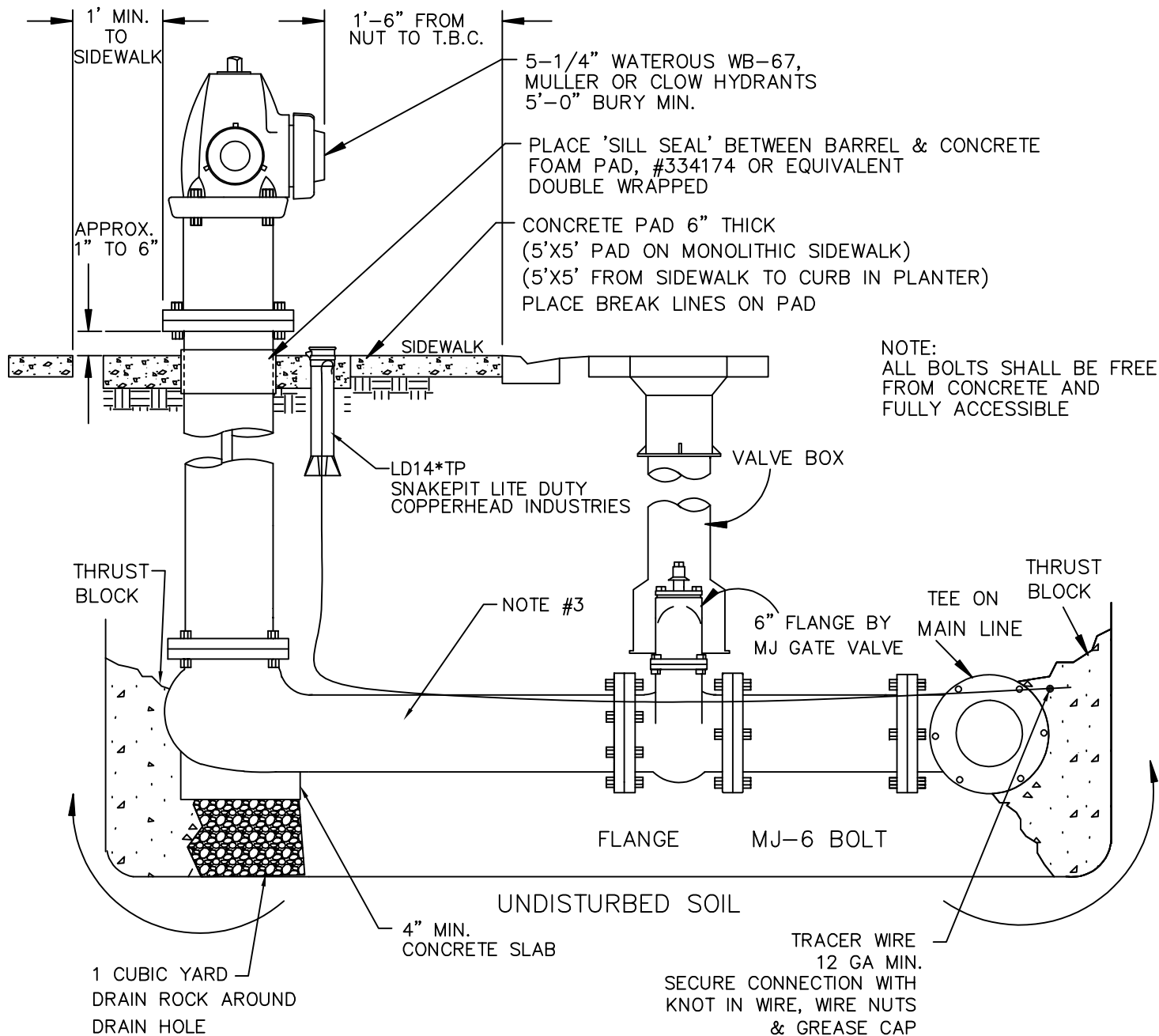


STANDARD DETAILS FOR

WATER AIR VAC VENT

DRAWING NO.

13



NOTE:
ALL BOLTS SHALL BE FREE FROM CONCRETE AND FULLY ACCESSIBLE

- NOTES:
1. VALVE TO BE PLACED IN ASPHALT W/CONCRETE RING
 2. TRACER WIRE TO BE RUN UP HYDRANT BARREL IN 1" CONDUIT.
 3. THERE WILL BE NO SERVICE TAPS ALLOWED ON THE FIRE LINES.

DRAWN RSB
REVISED NOV. 2025
DATE NOV 2015
SCALE N.T.S.

EAGLE MOUNTAIN CITY

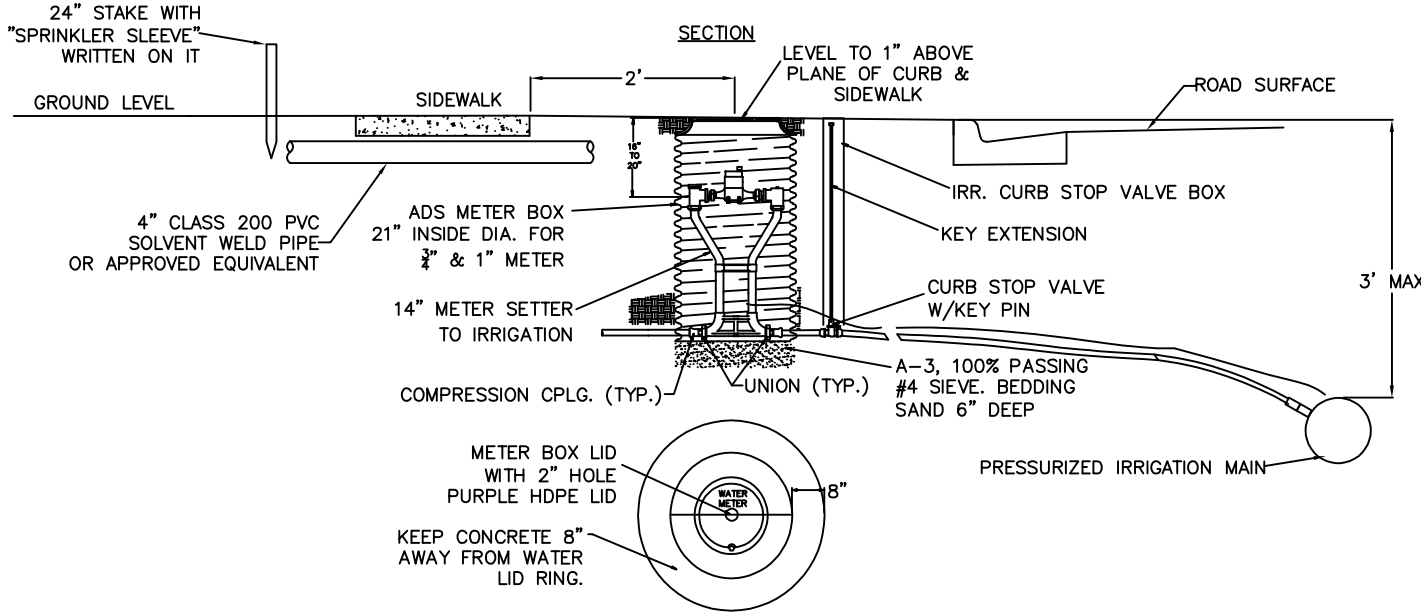
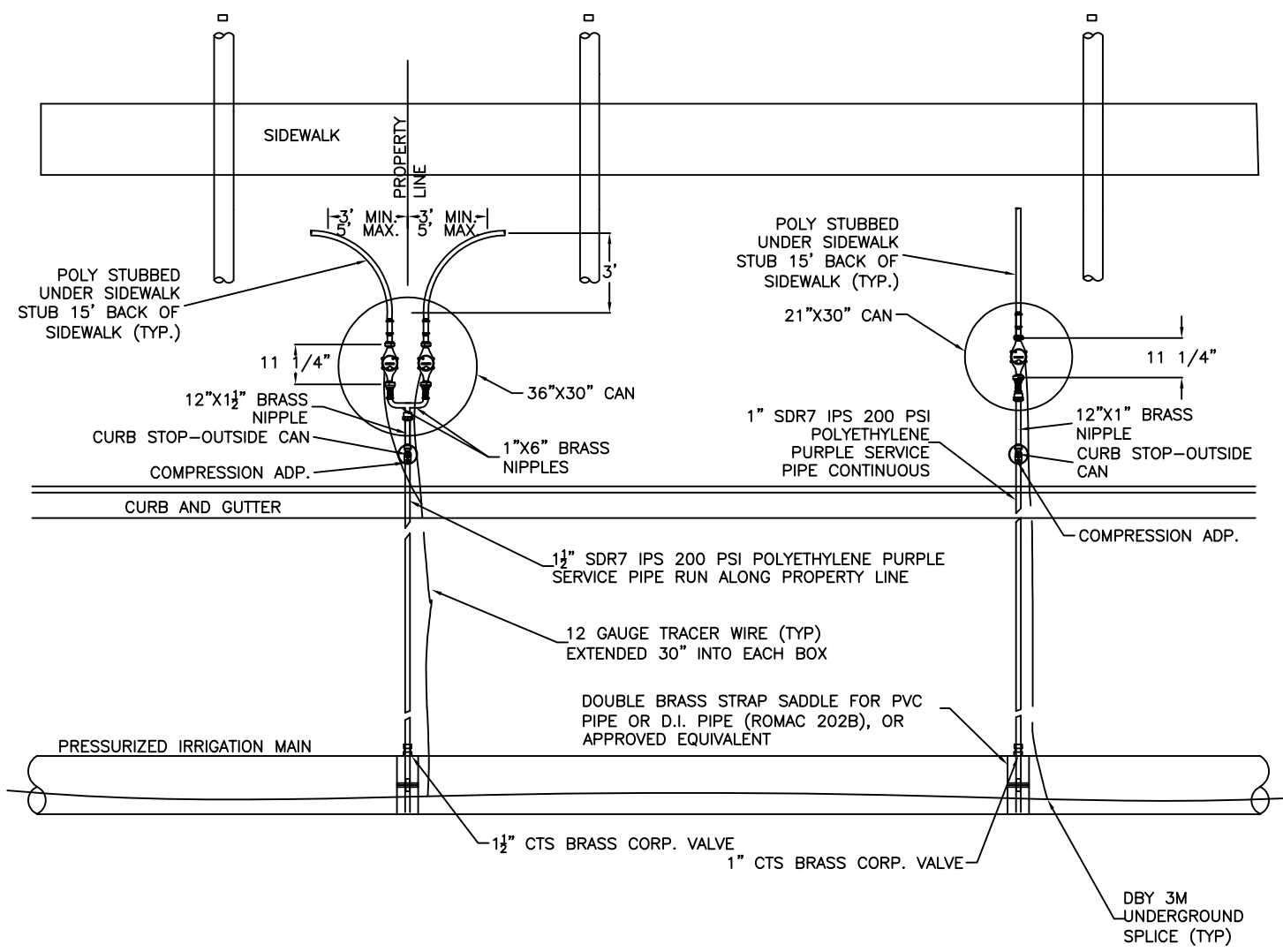


STANDARD DETAILS FOR

FIRE HYDRANT & VALVE

DRAWING NO.

14



- NOTES:**
1. STANDARD SERVICE SIZE SHALL BE 1" FOR DUAL SERVICES AND FOR SINGLE SERVICES.
 2. STAINLESS STEEL LINER INSERTS WILL BE REQUIRED INSIDE OF TUBING AT COMPRESSION FITTINGS.
 3. ALL FITTINGS SHALL BE COMPATIBLE WITH SERVICE SIZE.
 4. SERVICE LATERAL SHALL SLOPE TOWARDS PRESSURIZED IRRIGATION MAIN.
 5. SPRINKLER SLEEVE SHALL NOT BE IN LINE WITH ANY UTILITY BOXES.
 6. 4" SLEEVE SHALL BE BURIED 1' BELOW GRADE.
 7. 3/4" & 1" METER INSTALLED BY EAGLE MOUNTAIN CITY.
 8. 1 1/2" OR LARGER METER SEE CULINARY VAULT DETAIL.

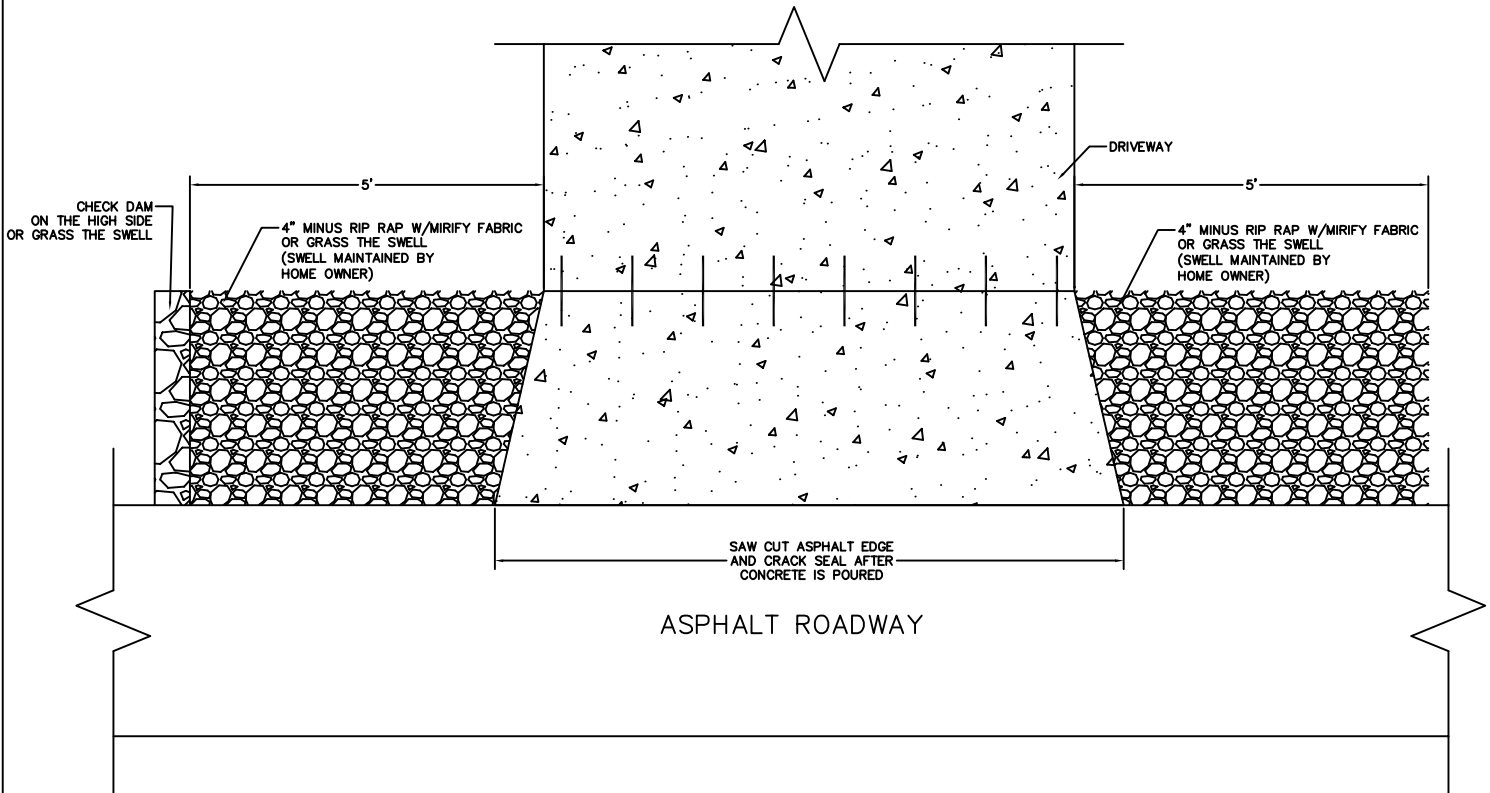
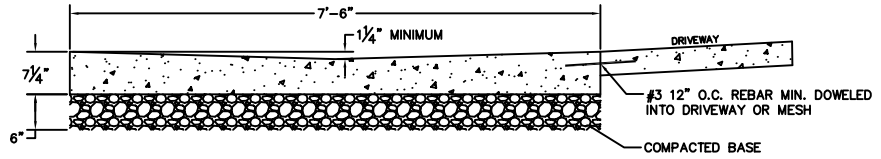
DRAWN	RSB
REVISED	APRIL 2024
DATE	NOV 2023
SCALE	N.T.S.

EAGLE MOUNTAIN CITY



STANDARD DETAILS FOR
1" SINGLE & DUAL SERVICE LATERALS

DRAWING NO.
15



DRAWN	RSB
REVISED	APRIL 2024
DATE	SEPT 2020
SCALE	N.T.S.

EAGLE MOUNTAIN CITY



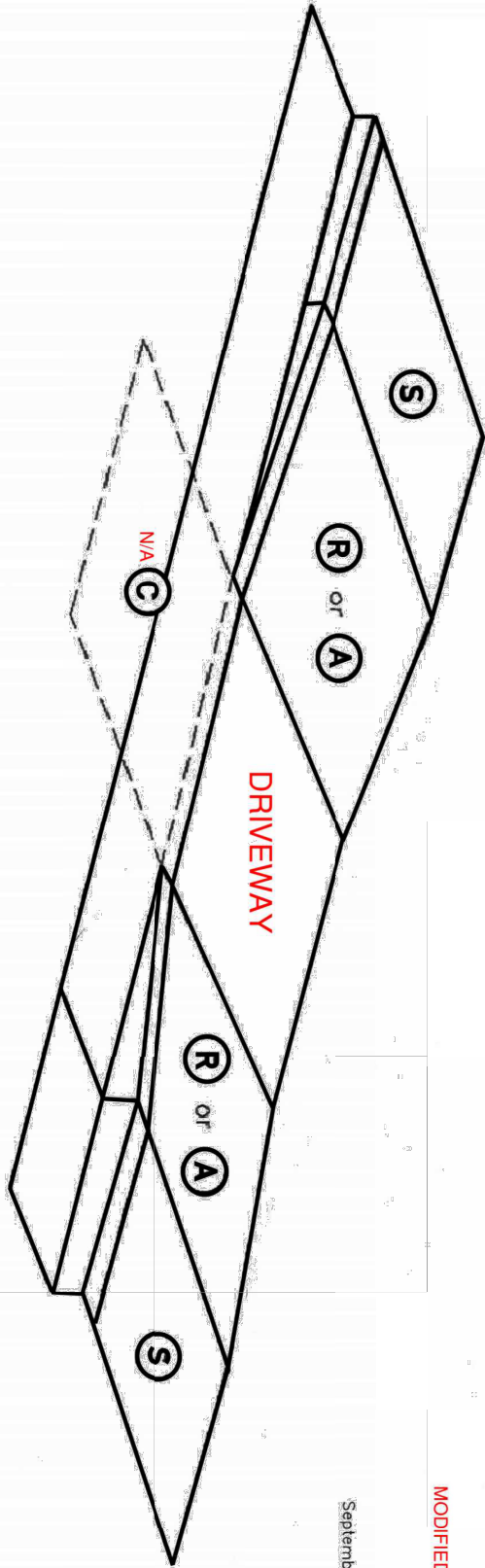
STANDARD DETAILS FOR

DRIVE APPROACH WATERWAYS

DRAWING NO.

16

SIDEWALK AGAINST CURB DRIVEWAY REQUIREMENTS FOR ADA COMPLIANCE



SLOPE TABLE

	RUNNING SLOPE (%) MAXIMUM	CROSS SLOPE (%) MAXIMUM
DRIVEWAY		
CURB RAMP	8.33	2
GEAR SPACE	5	STREET GRADE
SIDEWALK	5	2
APPROACH	8.33	2

(d) RUNNING SLOPE IS IN THE DIRECTION OF PEDESTRIAN TRAVEL. RUNNING SLOPE OF FLARE IS PARALLEL TO BACK OF CURB.
 (b) CROSS SLOPE IS PERPENDICULAR TO DIRECTION OF PEDESTRIAN TRAVEL.

MODIFIED FROM APWA

Plan
236.3
 September 2011

EXAMPLE 5



DRAWN	RSB
REVISED	APRIL 2024
DATE	MARCH 2024
SCALE	N.T.S.

EAGLE MOUNTAIN CITY



STANDARD DETAILS FOR

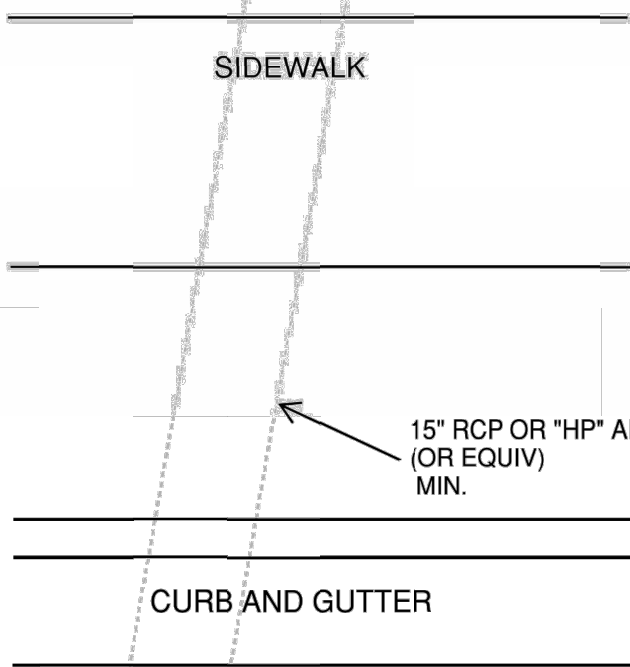
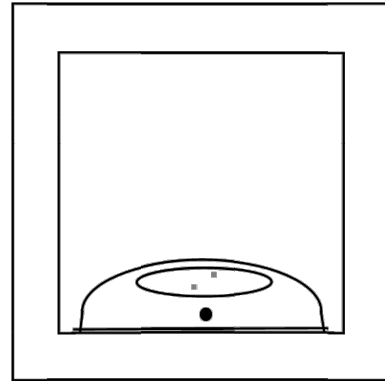
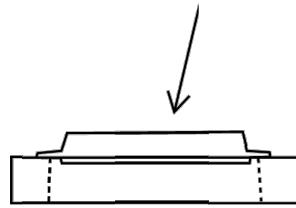
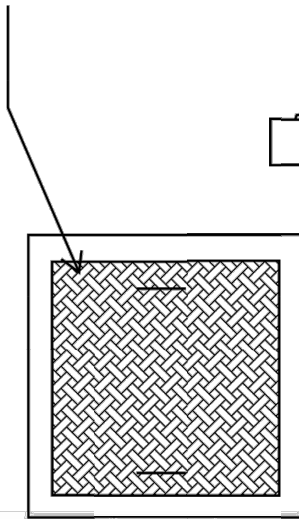
ADA FOR DRIVEWAYS

DRAWING NO.

17

SOLID LID SET FLUSH TO TOP OF BOX WITH LIFTING HANDLES

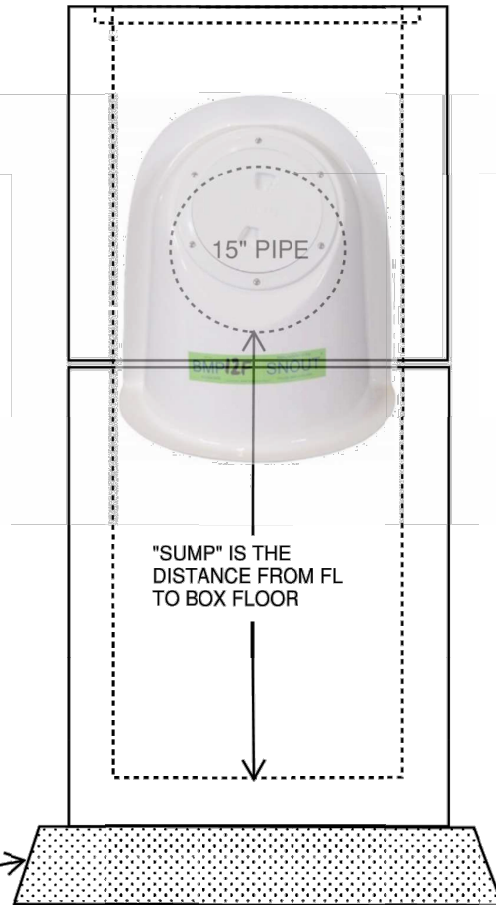
CONCRETE FLAT LID WITH 30" HOLE AND RING/COVER ACCEPTABLE ALTERNATE



SIDEWALK

15" RCP OR "HP" ADS (OR EQUIV) MIN.

CURB AND GUTTER



"SUMP" IS THE DISTANCE FROM FL TO BOX FLOOR

12" COMPACTED GRAVEL (MIN)

ISOLATION BOX WITH "SNOUT" OIL / WATER SEPARATOR (OR EQUIV)

NOTES:

- 1) SUMP TO BE 2.5 TO 3 TIMES I.D. OF OUTLET PIPE.
- 2) 3' X 3' I.D. BOX MINIMUM. (T.B.D BY PIPE SIZE)
- 3) BOX BASE SECTION MAY BE NEEDED TO MEET SUMP REQ'S.
- 4) BOX, PIPE AND ALL MATERIALS MUST MEET EMC CONSTRUCTION STANDARDS.
- 5) BOX, PIPE AND ALL MATERIALS MUST BE ACCEPTED THROUGH THE SUBMITTAL PROCESS BEFORE INSTALLATION.
- 6) ALL STORM DRAIN UPSTREAM UP ISOLATION BOX CONSIDERED PRIVATE AND NOT MAINTAINED BY EAGLE MTN CITY.



DRAWN RSB
 REVISED APRIL 2024
 DATE MARCH 2024
 SCALE N.T.S.

EAGLE MOUNTAIN CITY

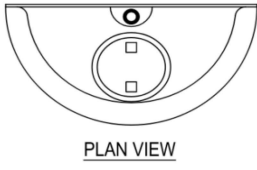
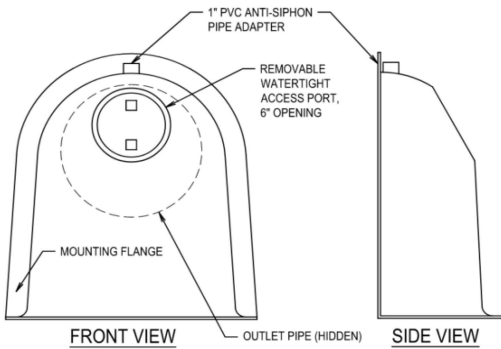


STANDARD DETAILS FOR

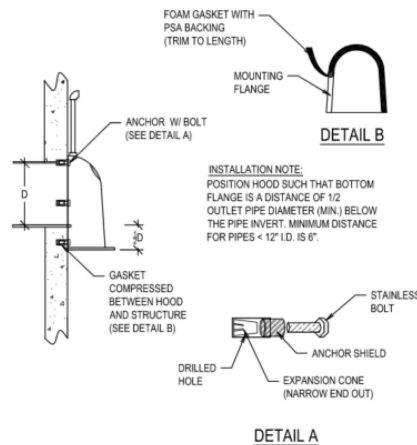
ISO BOX W/SNOUT SHT. #1

DRAWING NO.

18



SNOUT CONFIGURATION

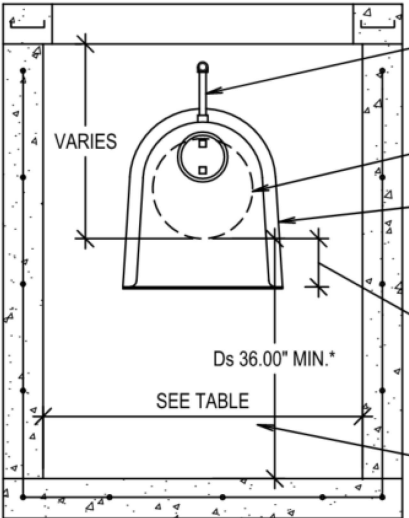


INSTALLATION NOTE:
 POSITION HOOD SUCH THAT BOTTOM FLANGE IS A DISTANCE OF 1/2 OUTLET PIPE DIAMETER (MIN.) BELOW THE PIPE INVERT. MINIMUM DISTANCE FOR PIPES < 12" I.D. IS 6".

SIZING EXAMPLES:

OUTLET HOLE SIZE	SNOUT SIZE	STRUCTURE SIZE
11.9" O.D. OR LESS	12 F or R	R FITS 36"-48" DIAM STRUCTURE
12.0"-17.9" O.D.	18 F or R	R FITS 48"-60" DIAM STRUCTURE
18.0"-23.9" O.D.	24 F or R	R FITS 48"-60" DIAM STRUCTURE
24.0"-29.9" O.D.	30 F or R	R FITS 60"-72" DIAM STRUCTURE
30.0"-47.9" O.D.	48 F	
30.0"-53.9" O.D.	54R/72	FITS 72" DIAM STRUCTURE ONLY
48.0"-95.9" O.D.	96 F	

NOTE: USE ONLY "F" SERIES SNOUTS FOR RECTANGULAR OR SQUARE STRUCTURES, AVAILABLE IN 12", 18", 24", 30", 48", AND 96" SIZES. USE ONLY "R" SERIES SNOUTS FOR ROUND STRUCTURES, AVAILABLE IN 12", 18", 24", 30", AND 54" SIZES.



ANTI-SIPHON VENT STACK SIZED ACCORDING TO TOP OF STRUCTURE OR GRATE. 3" MIN. HEIGHT.

D_p OUTLET PIPE DIAMETER (I.D.)

"SNOUT" OIL/DEBRIS STOP BY BMP, INC. INSTALLED PER MFG. SPECIFICATION

BOTTOM OF HOOD 1/2 PIPE I.D. BELOW INVERT OF PIPE (6" MIN.)

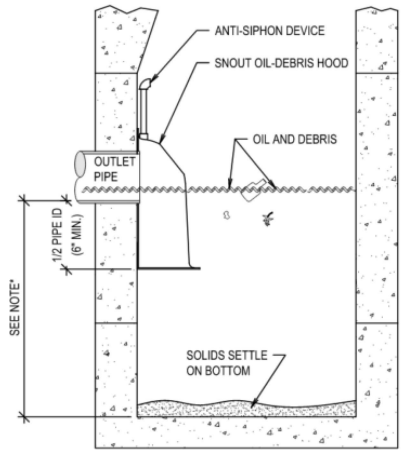
WIDTH OF STRUCTURE

D_s 36.00" MIN.*

SEE TABLE

SPECIFICATIONS:

- ALL HOODS AND TRAPS FOR CATCH BASINS AND WATER QUALITY STRUCTURES SHALL BE AS MANUFACTURED BY: BEST MANAGEMENT PRODUCTS, INC. 53 MT. ARCHER RD. LYME, CT 06371 (860) 434-0277, (860) 434-3195 FAX TOLL FREE: (800) 504-8008 OR (888) 354-7585 WEB SITE: www.bmpinc.com OR PRE-APPROVED EQUAL
- ALL HOODS SHALL BE CONSTRUCTED OF A GLASS REINFORCED RESIN COMPOSITE WITH ISO GEL COAT EXTERIOR FINISH WITH A MINIMUM 0.125" LAMINATE THICKNESS.
- ALL HOODS SHALL BE EQUIPPED WITH A WATERTIGHT ACCESS PORT, A MOUNTING FLANGE, AND AN ANTI-SIPHON VENT AS DRAWN. (SEE CONFIGURATION DETAIL)
- THE SIZE AND POSITION OF THE HOOD SHALL BE DETERMINED BY OUTLET PIPE SIZE AS PER MANUFACTURER'S RECOMMENDATION.
- THE BOTTOM OF THE HOOD SHALL EXTEND DOWNWARD A DISTANCE EQUAL TO 1/2 THE OUTLET PIPE DIAMETER WITH A MINIMUM DISTANCE OF 6" FOR PIPES < 12" I.D.
- THE ANTI-SIPHON VENT SHALL EXTEND ABOVE HOOD BY MINIMUM OF 3" AND A MAXIMUM OF 24" ACCORDING TO STRUCTURE CONFIGURATION.
- THE SURFACE OF THE STRUCTURE WHERE THE HOOD IS MOUNTED SHALL BE FINISHED SMOOTH AND FREE OF LOOSE MATERIAL.
- THE HOOD SHALL BE SECURELY ATTACHED TO STRUCTURE WALL WITH 3/8" STAINLESS STEEL BOLTS AND OIL-RESISTANT GASKET AS SUPPLIED BY MANUFACTURER. (SEE INSTALLATION DETAIL)
- INSTALLATION INSTRUCTIONS SHALL BE FURNISHED WITH MANUFACTURER SUPPLIED INSTALLATION KIT. INSTALLATION KIT SHALL INCLUDE:
 - INSTALLATION INSTRUCTIONS
 - PVC ANTI-SIPHON VENT PIPE AND ADAPTER
 - OIL-RESISTANT CRUSHED CELL FOAM GASKET WITH PSA BACKING
 - 3/8" STAINLESS STEEL BOLTS
 - ANCHOR SHIELDS



NOTE: SUMP DEPTH OF 36" MIN. FOR < 12" DIA. OUTLET. FOR OUTLETS > OR= 15", DEPTH = 2.5 TO 3 X'S DIAM.

TYPICAL INSTALLATION

US Patent # 6126817

HOOD SPECIFICATION FOR CATCH BASINS AND WATER QUALITY STRUCTURES		
DESCRIPTION	DATE	SCALE
OIL - DEBRIS HOOD SPECIFICATION AND INSTALLATION (TYPICAL)	09/08/00	NONE
	DRAWING NUMBER SP-SN	

DRAWN RSB
 REVISED APRIL 2024
 DATE MARCH 2024
 SCALE N.T.S.

EAGLE MOUNTAIN CITY

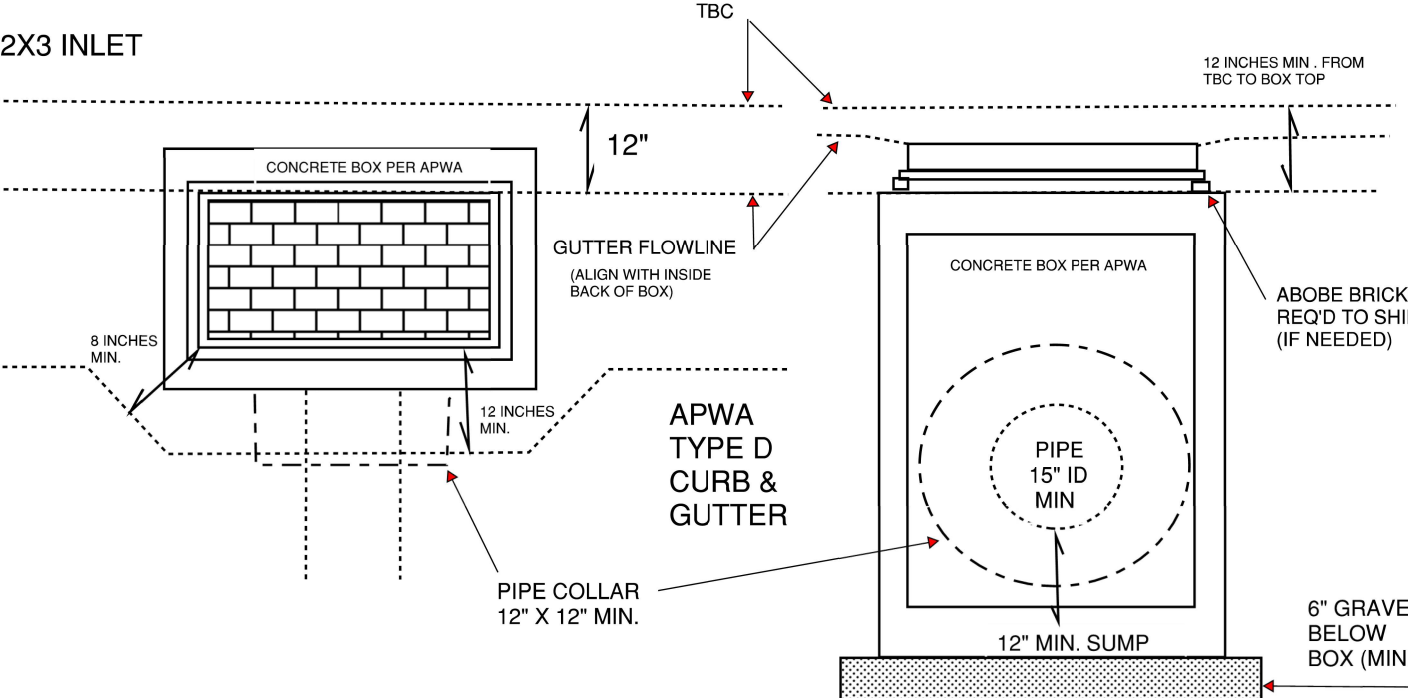
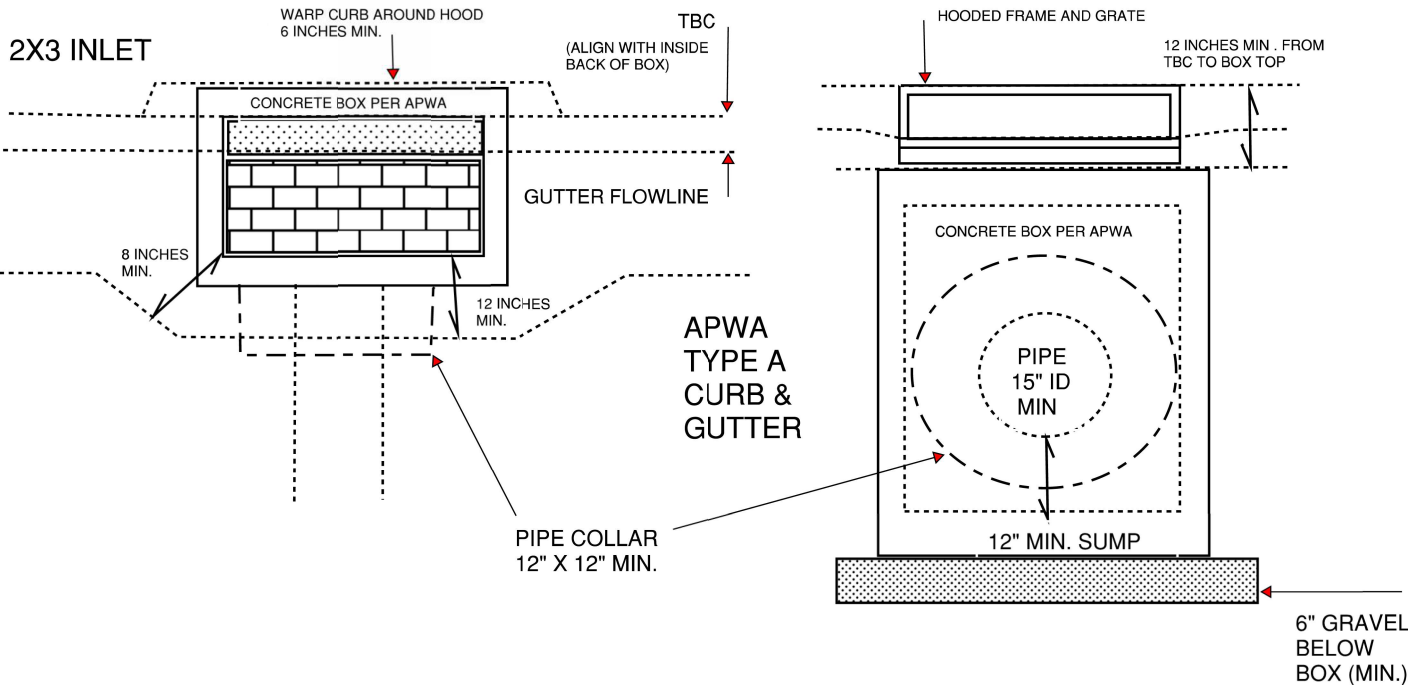


STANDARD DETAILS FOR

ISO BOX W/SNOUT SHT. #2

DRAWING NO.

19



BOX PLACEMENT FOR APWA TYPE A AND D CURB AND GUTTER

- NOTES:
- 1) ALL BOXES MUST BE IN ALIGNMENT TO CURB AND GUTTER AS SHOWN + - 2".
 - 2) CONCRETE BETWEEN FRAME / GRATE AND CONCRETE BOX MUST BE FORMED TO HAVE A SMOOTH SEALED FACE (NO HONEYCOMB).
 - 3) STRUCTURAL SUPPORTS MUST REMAIN IN PLACE (CORNERS AND TOP OF BOX).
 - 4) ALL GRATES TO BE "BICYCLE SAFE".



DRAWN	RSB
REVISED	JULY 2024
DATE	APRIL 2024
SCALE	N.T.S.

EAGLE MOUNTAIN CITY



STANDARD DETAILS FOR
TYPE 'A' & 'D' CURB BOX PLACEMENT

DRAWING NO.
20

4'-0"

SWPPP

STORM WATER POLLUTION PREVENTION PLAN

A UTAH POLLUTANT DISCHARGE ELIMINATION SYSTEM (UPDES) PERMIT COVERS THIS CONSTRUCTION SITE, IF ANY NON-STORM WATER DISCHARGE OR SEVERE VEHICLE TRACKING OCCURS, PLEASE CALL: 801-786-6636

PROJECT NAME:

SWPPP LOCATION:

SWPPP CONTACT:

3'-0"

SITE NOTICE

AUTHORIZATION
TO DISCHARGE
LETTER

ELECTRONIC
SWPPP ACCESS
QR IF
APPLICABLE

PUBLIC NOTICE

24" MIN.

DRAWN	RSB
REVISED	APRIL 2024
DATE	MAY 2022
SCALE	VARIES

EAGLE MOUNTAIN CITY

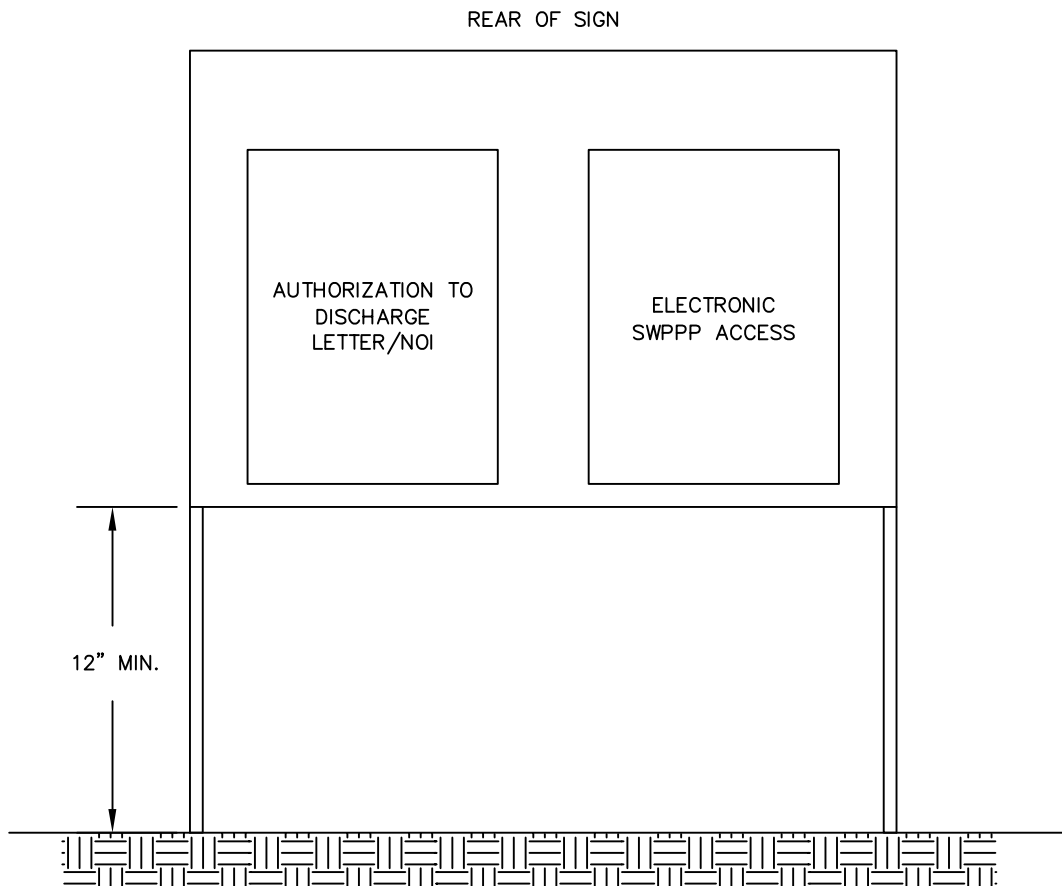
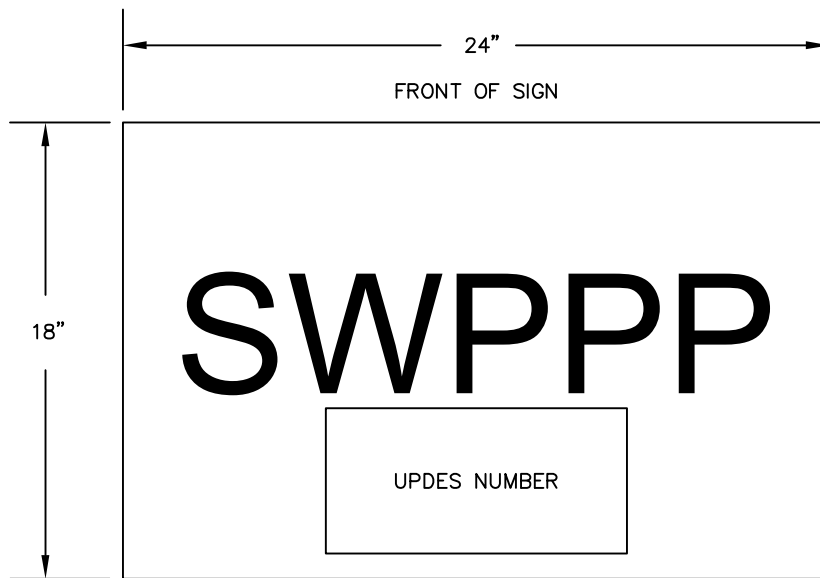


STANDARD DETAILS FOR

1 ACRE OR LARGE RESIDENCE AND ALL COMMERCIAL SWPPP SIGN

DRAWING NO.

21



DRAWN	RSB
REVISED	APRIL 2024
DATE	MAY 2022
SCALE	VARIES

EAGLE MOUNTAIN CITY

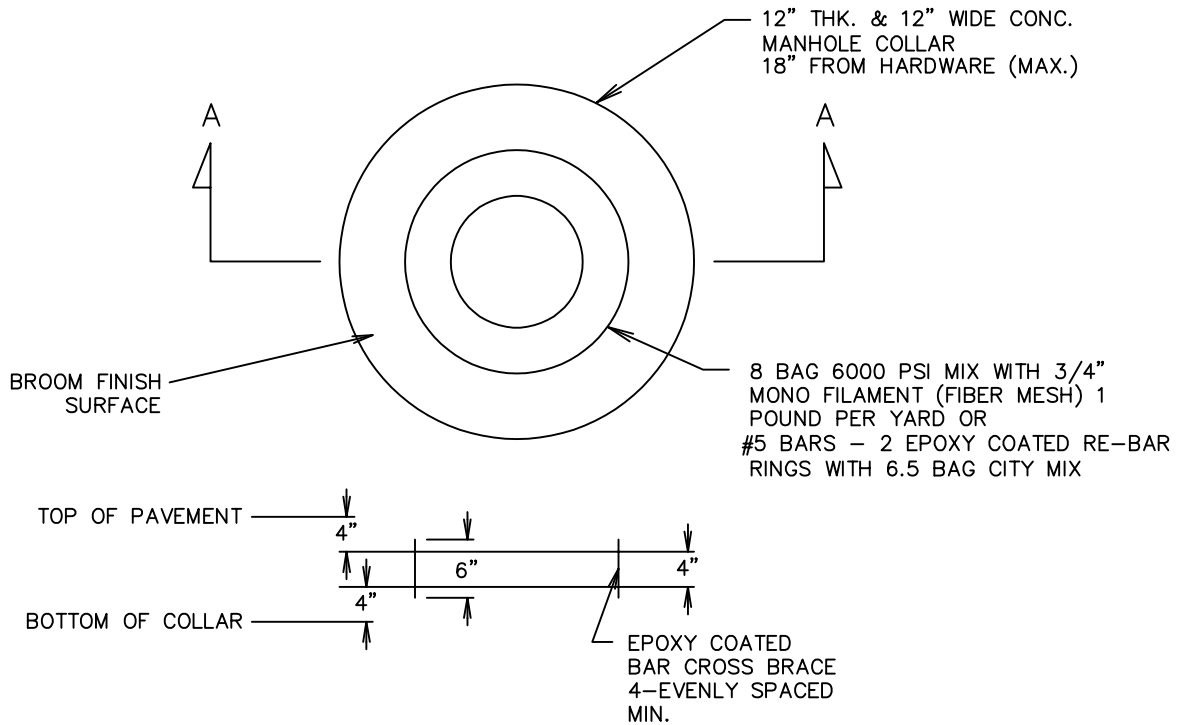


STANDARD DETAILS FOR

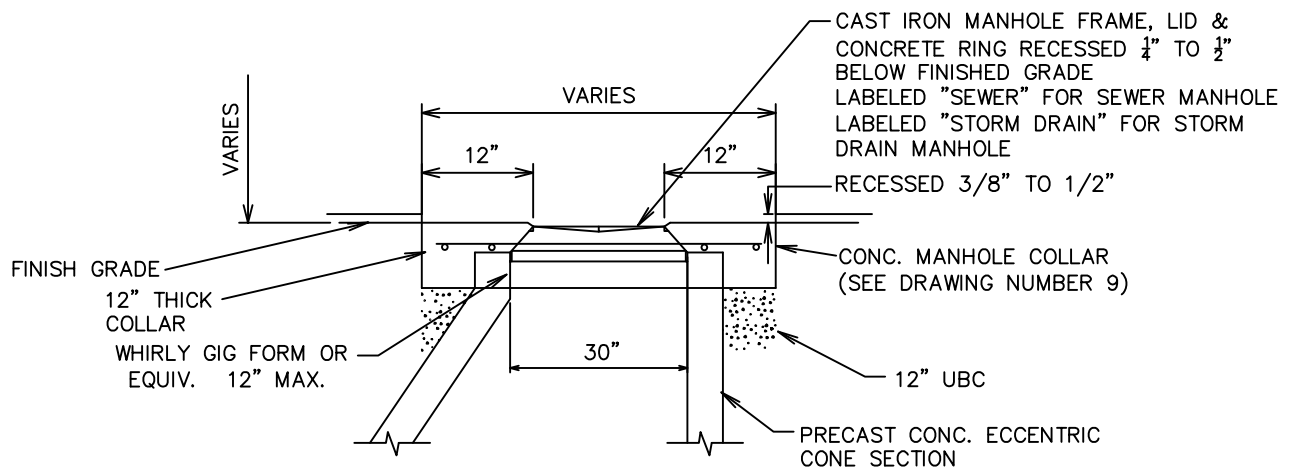
SINGLE FAMILY RESIDENCE SWPPP SIGN

DRAWING NO.

22



RE-BAR RING



SECTION A-A

- NOTE:
1. CONCRETE COLLAR TO BE 1/4' TO 1/2" BELOW PAVEMENT SURFACE
 2. CONCRETE MUST BE FROM RIM TO MANHOLE CONE & DOWN THE SIDES OF MANHOLE CONE TO GET 12" MIN.

DRAWN	RSB
REVISED	
DATE	MAY 2024
SCALE	VARIES

EAGLE MOUNTAIN CITY

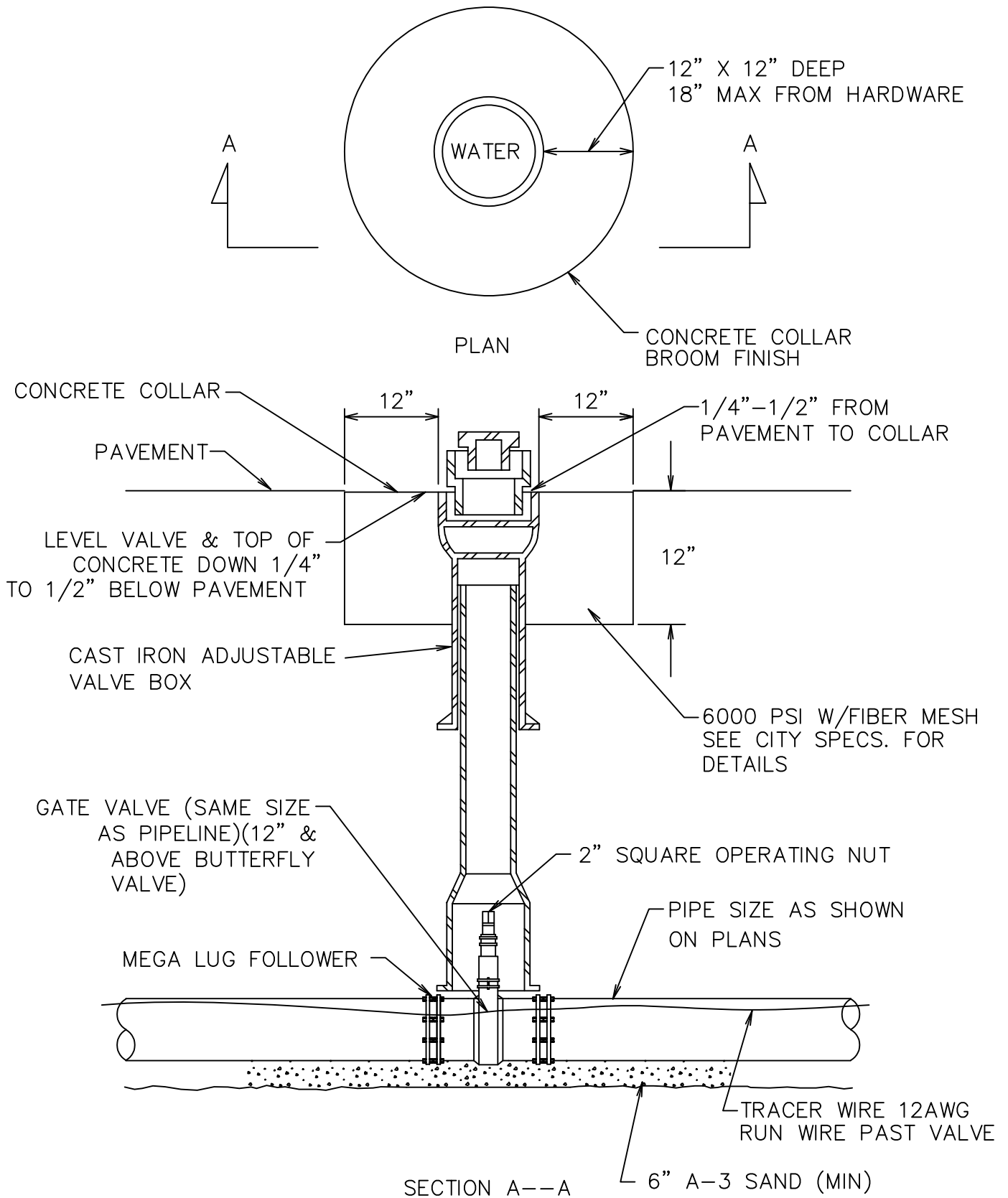


STANDARD DETAILS FOR

CONCRETE COLLARS
FOR MANHOLES

DRAWING NO.

23



NOTES:

1. STREET COLLAR CONCRETE MUST BE 6000 PSI (MIN.) W/1 LBS. 3/4" MONOFILAMENT PER YARD.
2. ALL VALVE BOX ADJUSTMENT MUST BE THROUGH SLIDER RISER. IF ONE BASE & TOP IS STILL TOO LOW ANOTHER BASE MUST BE CUT TO GRADE & USED. NO DROP IN RISERS ALLOWED.
3. COLLARS MUST BE 12" FROM VALVE BOX (WIDE-CIRCULAR) & 12" DEEP. NO COLLARS ALLOWED OVER 18" FROM HARDWARE. COMPACT ALL LOOSE UTBC OR TRENCH FILL BEFORE POURING COLLAR.
4. ALL COLLARS REQUIRE INSPECTION BEFORE PLACING CONCRETE.
5. VALVE BOXES & MANHOLES IN LANDSCAPING REQUIRE 8" WIDE BY 8" DEEP, 4000 PSI COLLAR.

DRAWN	RSB
REVISED	AUG. 2024
DATE	MAY 2024
SCALE	VARIES

EAGLE MOUNTAIN CITY



STANDARD DETAILS FOR

CONCRETE COLLARS FOR
WATER VALVES

DRAWING NO.

24

PUE, UTILITIES & SET BACK DETAIL

HOME FOOT PRINT

GARAGE

PORCH

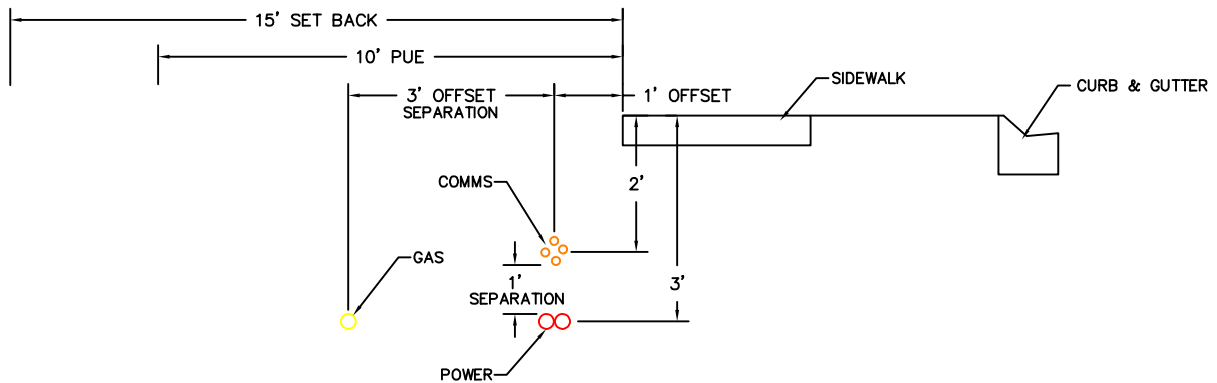
15'-0" SET BACK

10'-0" PUE

POWER & COMMUNICATIONS

GAS

SIDEWALK



DRAWN	RSB
REVISED	--
DATE	JULY 2024
SCALE	N.T.S.

EAGLE MOUNTAIN CITY

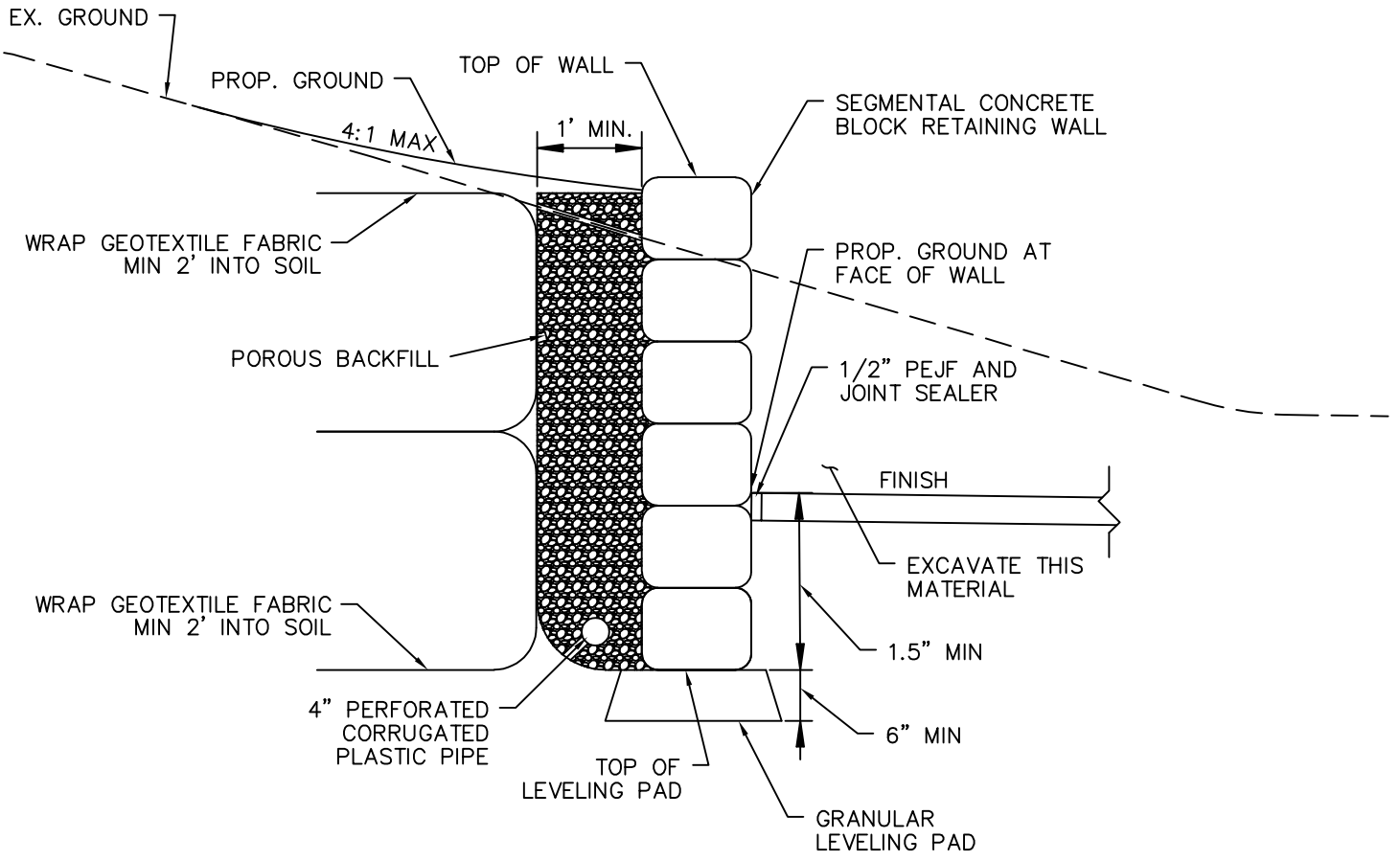


STANDARD DETAILS FOR

PUE, UTILITIES & SETBACK DETAIL

DRAWING NO.

25



NOTES:

1. RETAINING WALLS OVER 4' TALL REQUIRES A BUILDING PERMIT.

DRAWN	RSB
REVISED	--
DATE	AUG 2024
SCALE	N.T.S.

EAGLE MOUNTAIN CITY

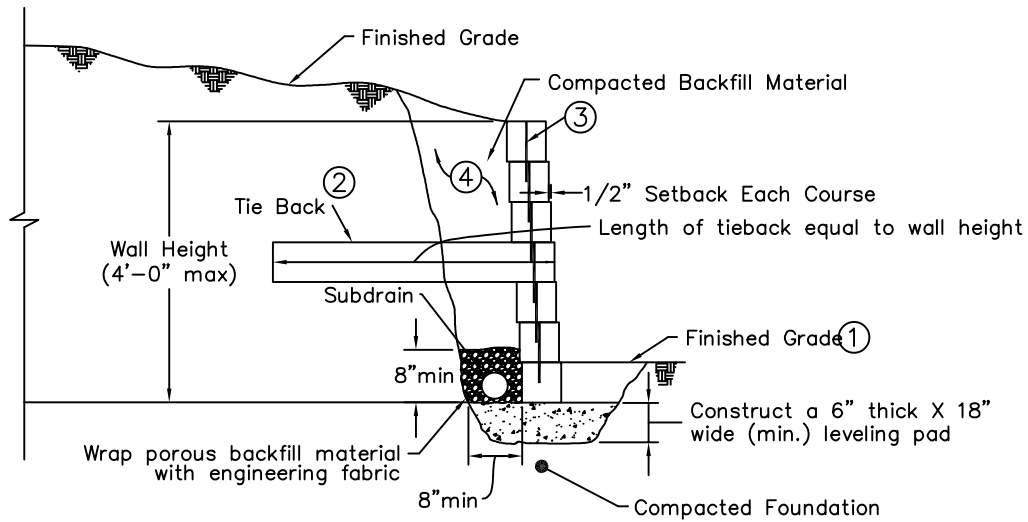


STANDARD DETAILS FOR

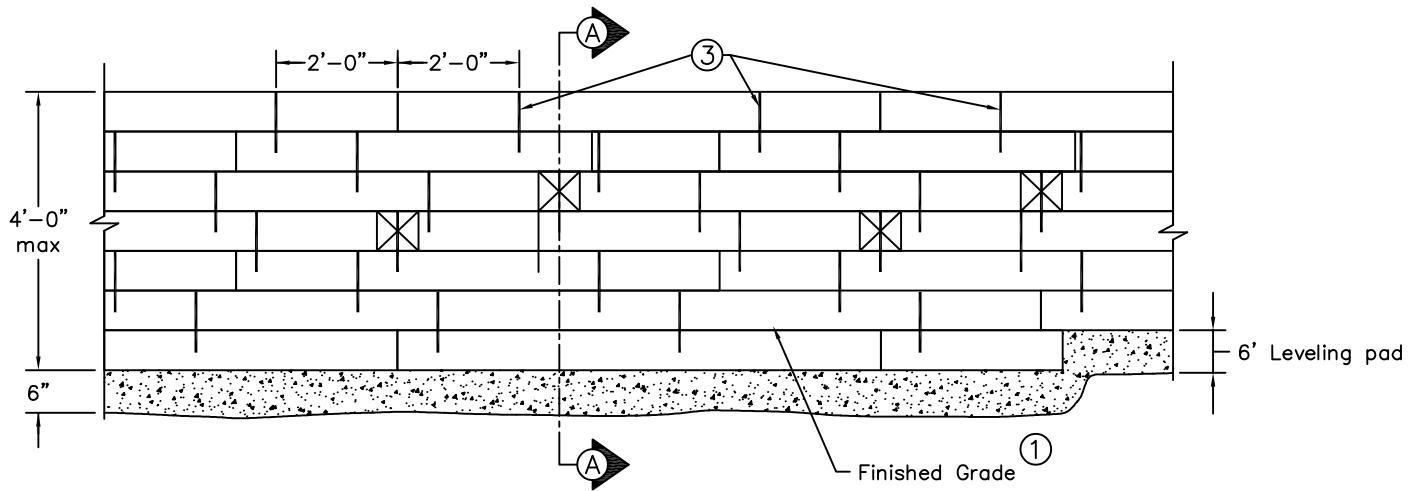
CMU BLOCK RETAINING WALL

DRAWING NO.

26



SECTION A-A



ELEVATION

- ① Construct entire first course of timbers beneath finished grade.
- ② No tie backs in upper two courses or lower three courses of timbers. Stagger tie back location.
- ③ Secure each course with spikes.
- ④ Excavate and place backfill material. Use suitable soil or granular material.

DRAWN RSB
 REVISED --
 DATE AUG 2024
 SCALE N.T.S.

EAGLE MOUNTAIN CITY

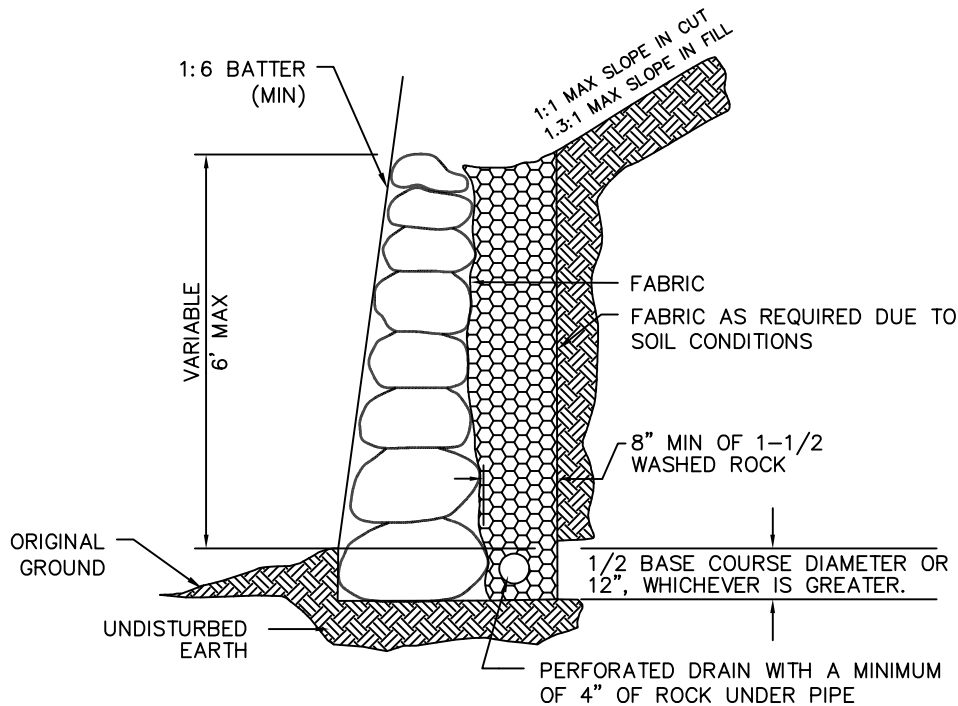


STANDARD DETAILS FOR

TIMBER RETAINING WALL

DRAWING NO.

27



GENERAL NOTES:

1. Rockeries of 4' or lower shall be constructed of 3-man to 2-man from bottom to top. rock size categories shall include:
 - Two-man rocks (300 to 600 pounds),
13 inches in least dimension;
 - Three-man rocks (800 to 1200 pounds),
16 inches in least dimension;
 - Four-man rocks (1500 to 2200 pounds),
18 inches in least dimension;
 - Five-man rocks (2400 to 3400 pounds),
24 inches in least dimension.
2. The rockery shall be installed with a smooth surface.
3. The long dimension of the rocks shall be oriented towards the bank to provide maximum stability.
4. The rock shall be placed so as to lock into two rocks in the lower tier.
5. Design varying from those indicated shall carry the seal of a Professional Engineer licensed in the State of Utah, experienced in soil mechanics.
6. Rockery walls higher than 4' must be designed by qualified engineer & inspected.
7. Drain runoff away from top of retaining wall.

DRAWN	RSB
REVISED	--
DATE	AUG 2024
SCALE	N.T.S.

EAGLE MOUNTAIN CITY

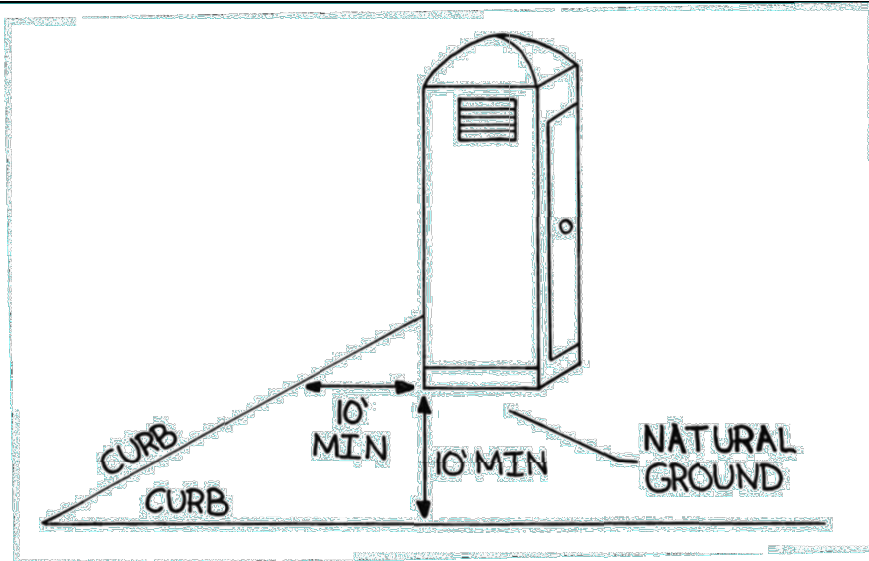


STANDARD DETAILS FOR

ROCKERY RETAINING WALL

DRAWING NO.

28



APPLICATION

- Provide temporary sanitary facilities when permanent facilities are too far from activities or are unavailable.

INSTALLATION/USE PROCEDURE

- Locate portable toilets away from waters of the state, and at least 10 feet from any storm water conveyance, inlet, curb and gutter, or conduit to a waterway.
- Wherever possible, locate portable toilets upon natural ground and not on impervious surfaces such as asphalt, concrete, or similar
- Prepare a level surface and provide clear access to the toilet(s) for servicing and for on-site personnel
- Secure portable toilets to prevent tipping

ALTERNATIVE DESIGN

- If it is not possible to locate toilets away from waters of the state, storm water conveyances, or paved surfaces, evaluate the need for additional controls such as secondary containment, additional surface preparation, or berms and implement as appropriate

MAINTENANCE

- Portable toilets should be maintained in good working order by licensed service
- Portable toilets should be inspected daily to detect any leaks.
- Damaged toilets must be repaired/replaced immediately
- All waste must be deposited in the sanitary sewer system for treatment with appropriate agency approval.

PERFORMANCE

- Portable toilets must be placed, secured, and maintained in such a way that sanitary waste is contained without leaks.
- Portable toilets must be placed, secured, and maintained in such a way that in the event of a spill or leak, sanitary waste would not enter any waters of the state, storm water conveyance, inlet, curb and gutter, or conduit to a waterway.

GENERAL

- The operator is responsible for selecting effective BMPs.

DRAWN	RSB
REVISED	--
DATE	NOV. 2024
SCALE	VARIES

EAGLE MOUNTAIN CITY

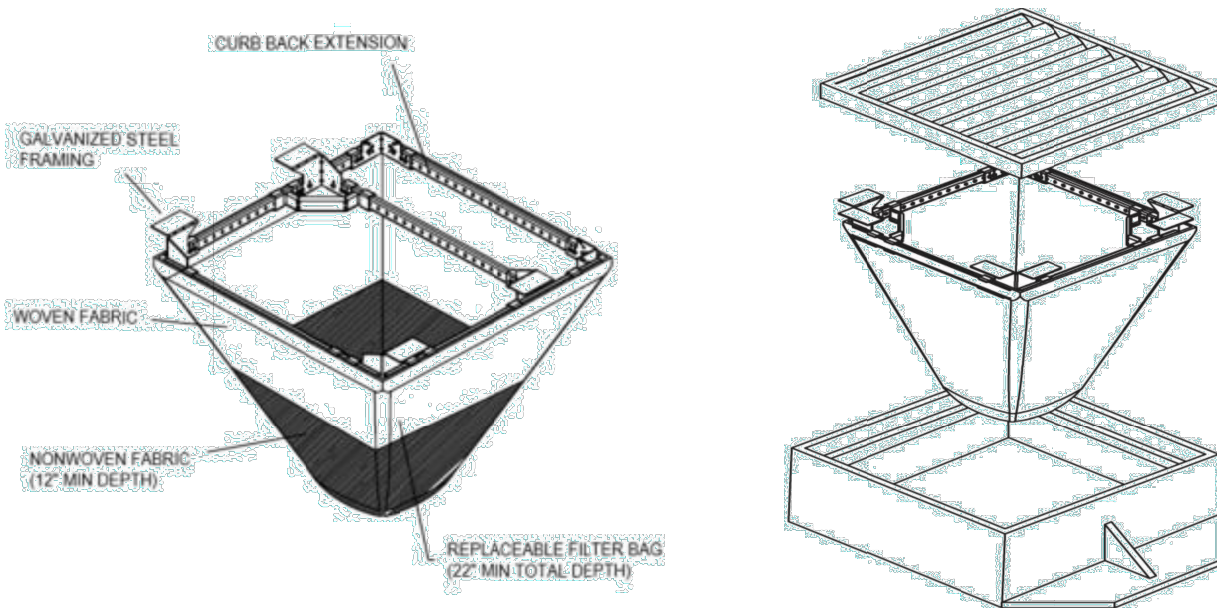


STANDARD DETAILS FOR

SWPPP PORTABLE TOILET

DRAWING NO.

29



APPLICATION

- As per Eagle Mountain City code 15.50.070, inlet protection must meet or exceed ASTM D8057.
- Use inlet protection methods to trap sediment and debris from runoff before it enters the stormwater system.
- Ideal for areas near storm drains, curb inlets, and other drainage structures.
- Not intended for high-flow areas without additional support measures.

SUBMITTAL AND OPERATION PROCEDURE

- Submit manufactures detail to the oversight authority and attach to this detail.
- Attached manufacturer installation and maintenance literature.
- Ensure the devices are securely fastened and properly positioned to maximize effectiveness.
- Regularly inspect and maintain the devices to ensure they are functioning correctly.
- Use appropriate types of inlet protection based on site-specific conditions.
- Do not install drop inlet systems without overflows in sag locations where hydroplaning is a risk.
- Install inlet protection measures that remove sediment from discharges prior to entry into any storm drain inlet that carries storm water flow from your site to surface water of the state, provided you have authority to access the storm drain inlet.
- Clean, or remove and replace, the protection measures as sediment accumulates, the filter becomes clogged, and/or performance is compromised. Where there is evidence of sediment accumulation adjacent to the inlet protection measure, remove the deposited sediment by the end of the same business day in which it is found

ALTERNATIVE DESIGN

- Alternative inlet protection devices may be used if they demonstrate equal or better performance to ASTM D8057.
- Submit alternatives to the oversight authority for approval.
- Document any alternative designs with detailed installation procedures and maintenance requirements.

MAINTENANCE

- Inspect inlet protection devices regularly, especially after storm events.
- Remove accumulated sediment and debris as needed to maintain effectiveness.
- Repair or replace damaged inlet protection devices prior to the next wet condition risk.
- Ensure a clear area around inlet protection devices to facilitate inspections and maintenance.

DRAWN	RSB
REVISED	--
DATE	NOV. 2024
SCALE	VARIES

EAGLE MOUNTAIN CITY

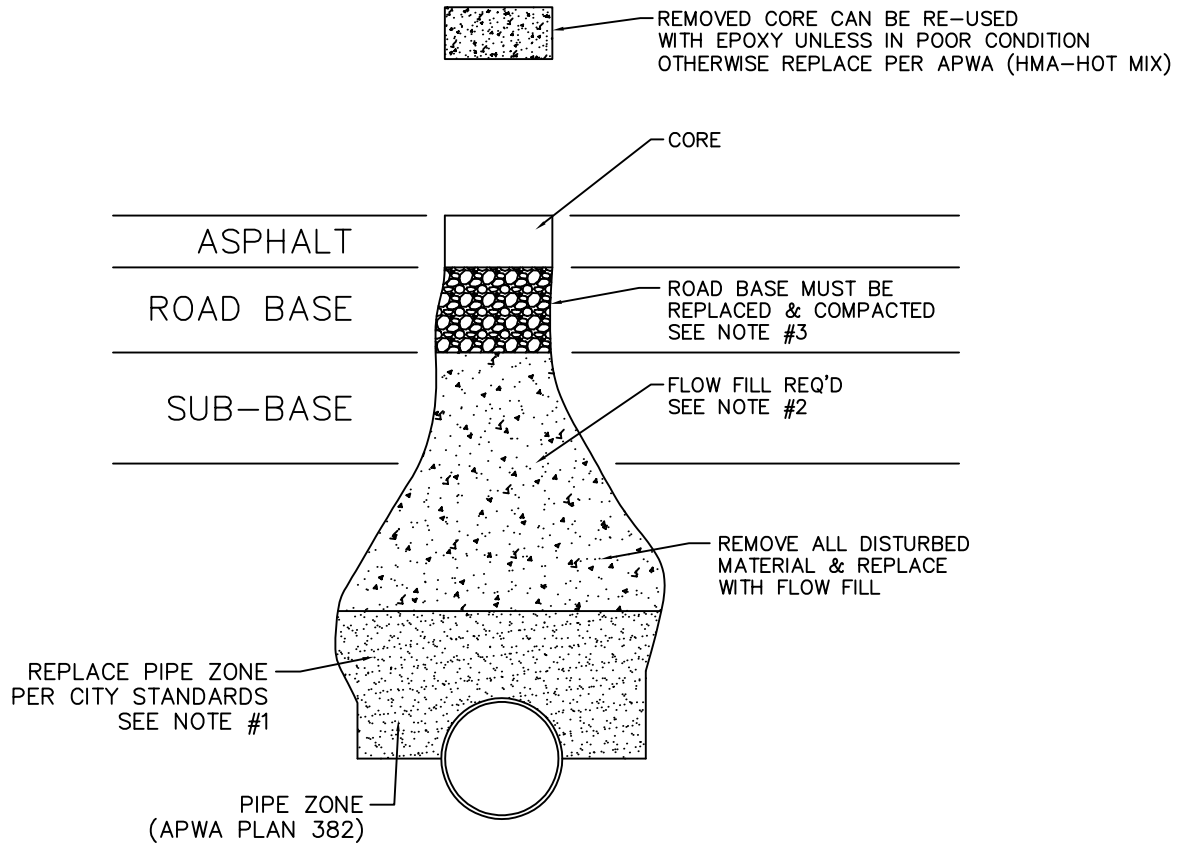


STANDARD DETAILS FOR

SWPPP INLET PROTECTION

DRAWING NO.

30



NOTE:

1. A-3 WITH 100% PASSING THE #4 SEIVE.
2. STRENGTH TO BE 60 PSI AT 28 DAYS THROUGH 90 PSI MAX.
3. STATE SPEC. GRADATION. 6" THICK MIN.
4. COVER THE ASPHALT CORE HOLE AT ALL TIMES WHILE TRAFFIC WILL BE IN CONTACT. (TOP HAT)
5. ALL WORK TO BE INSPECTED. (A) BEFORE FLOW-FILL IS PLACED. (B) BEFORE CORE IS REPLACED.

ASPHALT POTHOLE REPAIR

DRAWN	RSB
REVISED	--
DATE	FEB 2025
SCALE	N.T.S.

EAGLE MOUNTAIN CITY

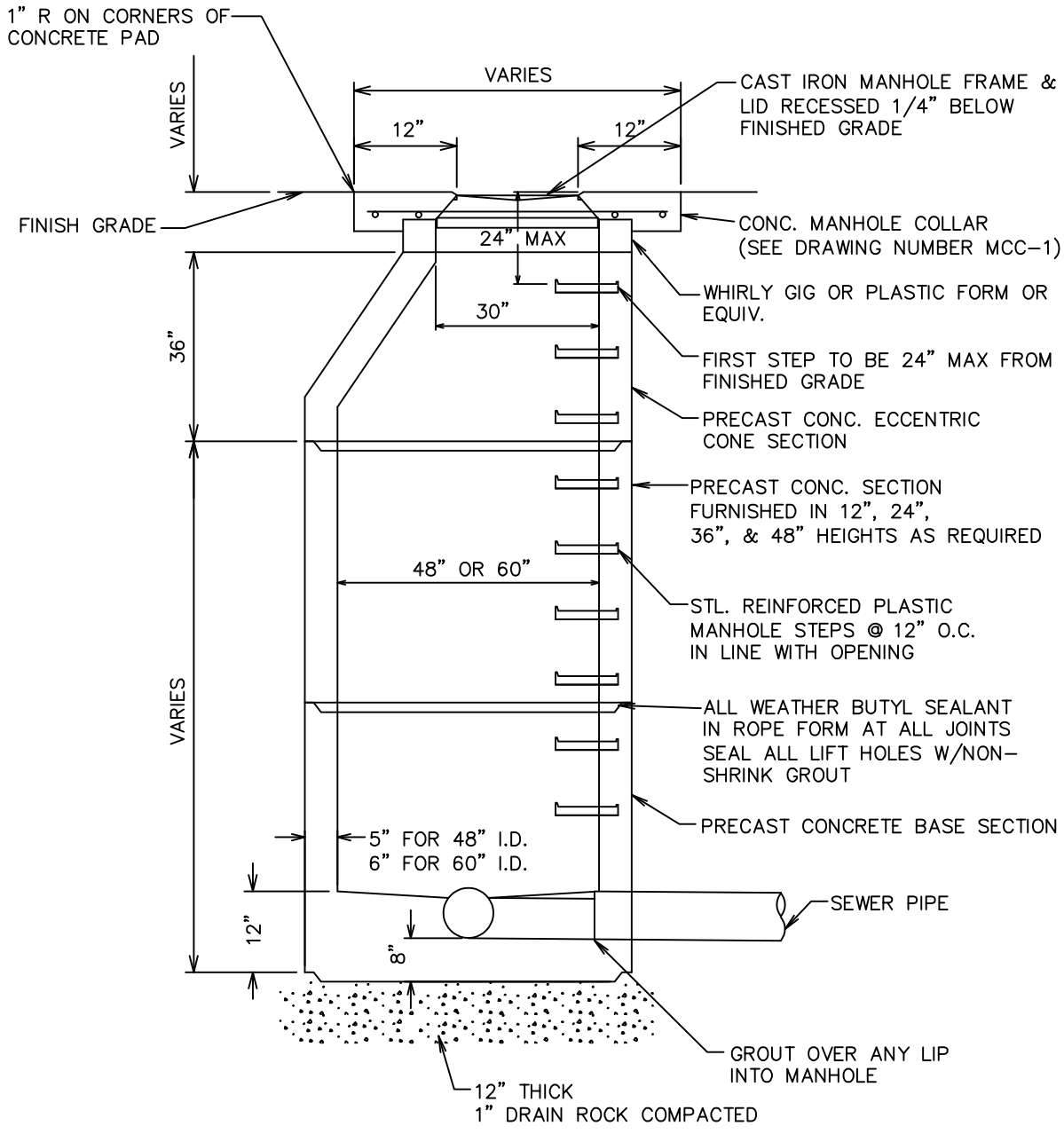


STANDARD DETAILS FOR

ASPHALT POTHOLE REPAIR

DRAWING NO.

31



NOTE: USE 48" I.D. MANHOLES FOR MAIN LINES LESS THEN 12" IN DIAMETER AND 60" I.D. MANHOLES FOR MAIN LINES 12" IN DIAMETER AND GREATER OR 3 OR MORE PIPE ENTERING THE MANHOLE.

DRAWN	RSB
REVISED	
DATE	JAN 2026
SCALE	VARIES

EAGLE MOUNTAIN CITY



STANDARD DETAILS FOR

MANHOLE CROSS SECTION

DRAWING NO.

32